

60  
GREAT  
QUEEN  
ST.

60  
GREAT  
QUEEN  
ST.

CONFERENCES IN  
THE GRAND TEMPLE

60  
GREAT  
QUEEN  
ST.

# AN ICONIC VENUE IN THE HEART OF COVENT GARDEN

INTRODUCTION

**03**

SPACES

**06**

VENUE HIRE

**19**

SUPPLIERS

**20**

CATERING

**21**

LOCATION

**22**

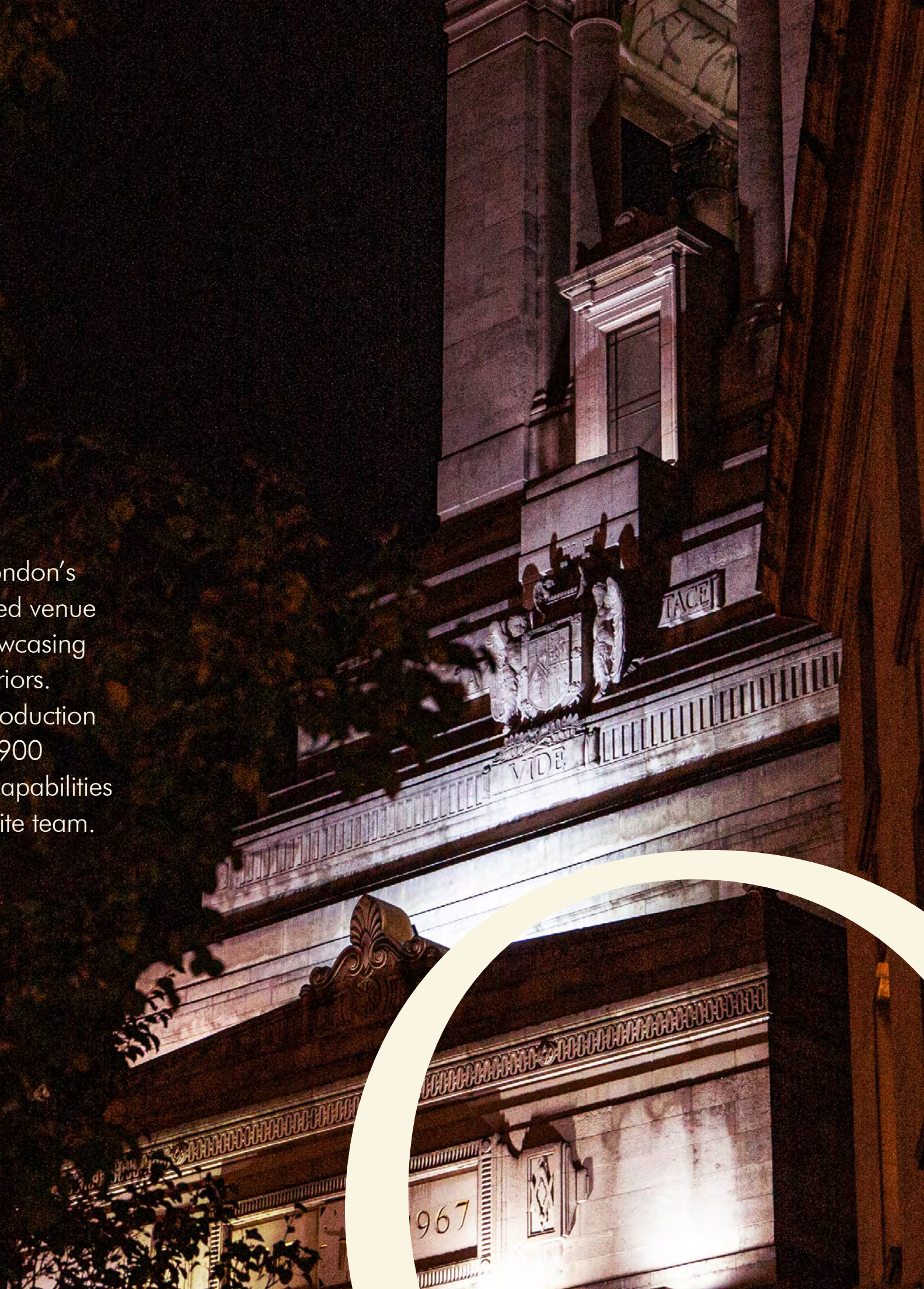
CONTACT

**23**

# WELCOME TO 60 GREAT QUEEN ST.

An Art Deco icon nestled in the heart of London's vibrant Covent Garden. This Grade II\* listed venue is a masterpiece of timeless elegance, showcasing breathtaking architecture and opulent interiors. This heritage venue blends modern day production capabilities for your conference for 250 - 900 guests, backed by impressive production capabilities AV, seamless service and a dedicated on site team.

[VIEW GALLERY](#)



# WHY 60 GREAT QUEEN STREET?



## PRIME CENTRAL LONDON LOCATION

Ideally situated in Covent Garden, our venue offers unparalleled accessibility and prestige in the heart of the city.



## PRODUCTION POTENTIAL

Creative branding opportunities throughout the building, allowing you to truly make the space your own.



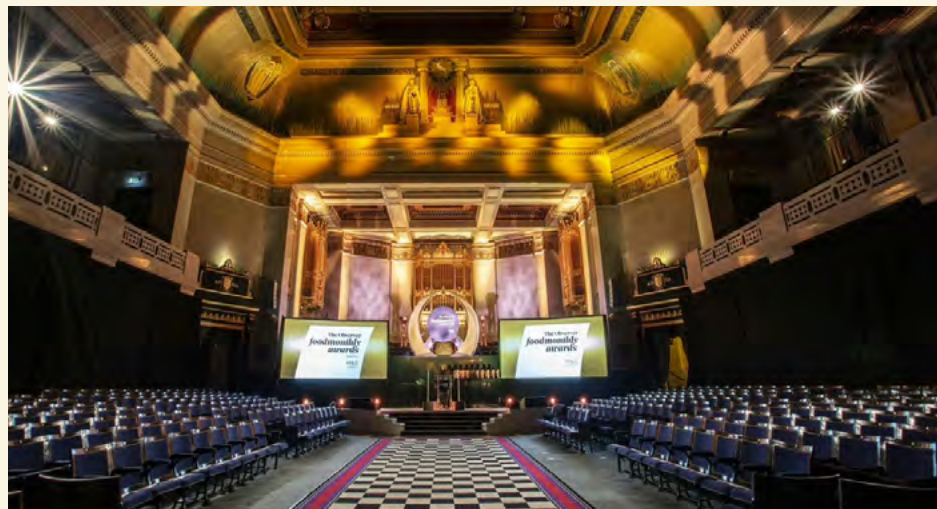
## FLEXIBLE SPACES WITH SCALABLE CAPACITIES

Our versatile rooms accommodate events of all sizes, from intimate gatherings to grand celebrations, offering seamless adaptability for any occasion.



## RICH HISTORIC SIGNIFICANCE

A striking Art Deco landmark, our venue exudes timeless elegance and a storied heritage that elevates any occasion.



## FULLY ACCESSIBLE

The venue is fully accessible, with step-free access throughout. Hearing loop systems are available.



## EXQUISITE CATERING

Indulge in exquisite catering curated by Moving Venue, London's most experienced and renowned event caterer.

# ARRIVAL

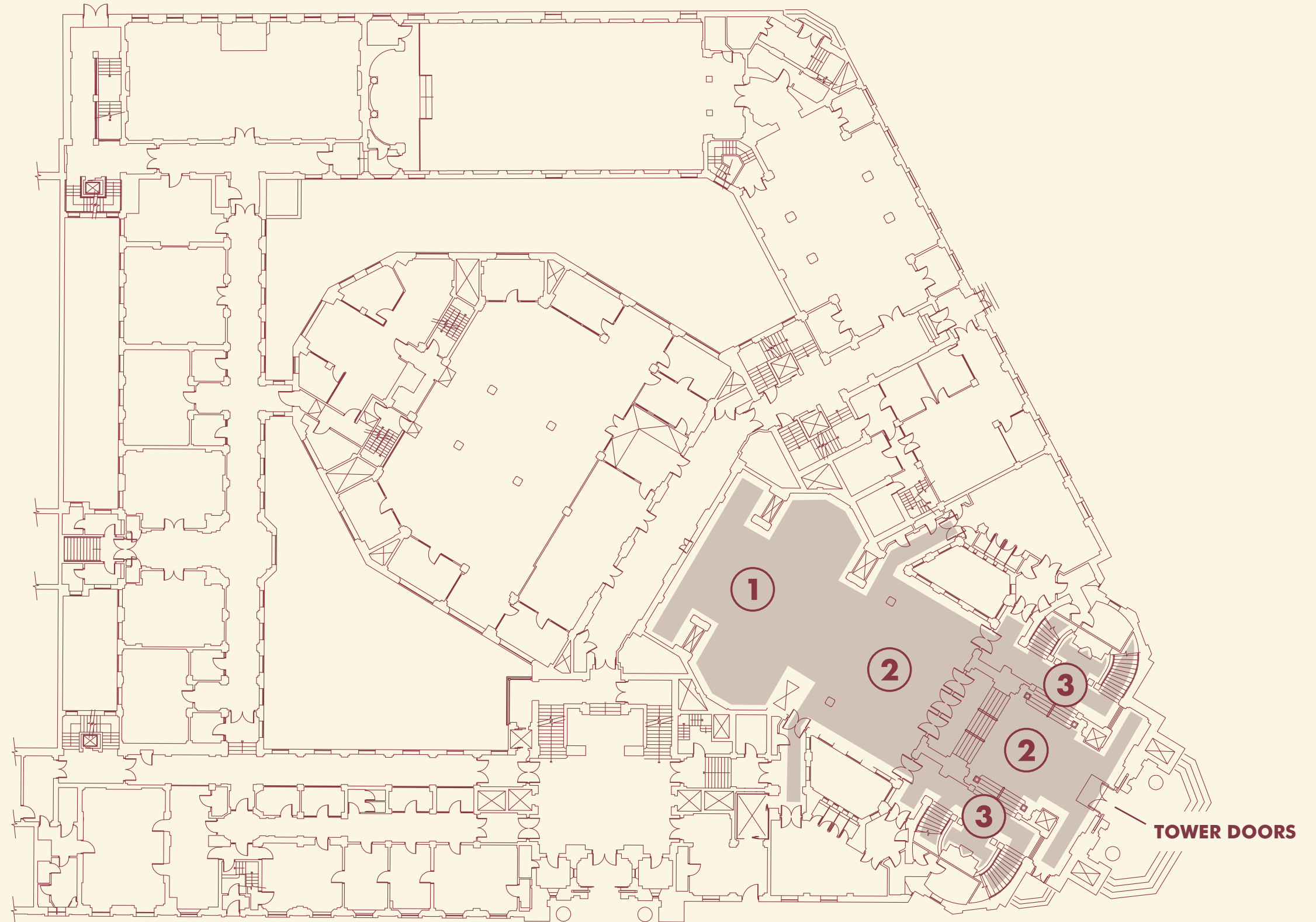
## A GRAND ENTRANCE TO DEFINE YOUR DAY

Make a strong first impression from the moment guests walk through the iconic Tower Doors. The foyer immediately sets the tone, offering a spacious and seamless area for registration, or easily transforming into a flexible breakout space for product launches, live demos or networking. The original cloakroom has been carefully preserved and can still be used as intended.

USABLE FLOOR SPACE  
**120 M<sup>22</sup>**

CAPACITIES  
THEATRE **100**  
CABARET **80**  
SEATED **80**  
STANDING **200**

- 1 THE CLOAKROOM**
- 2 FOYER**
- 3 STAIRS LEADING TO VESTIBULES**

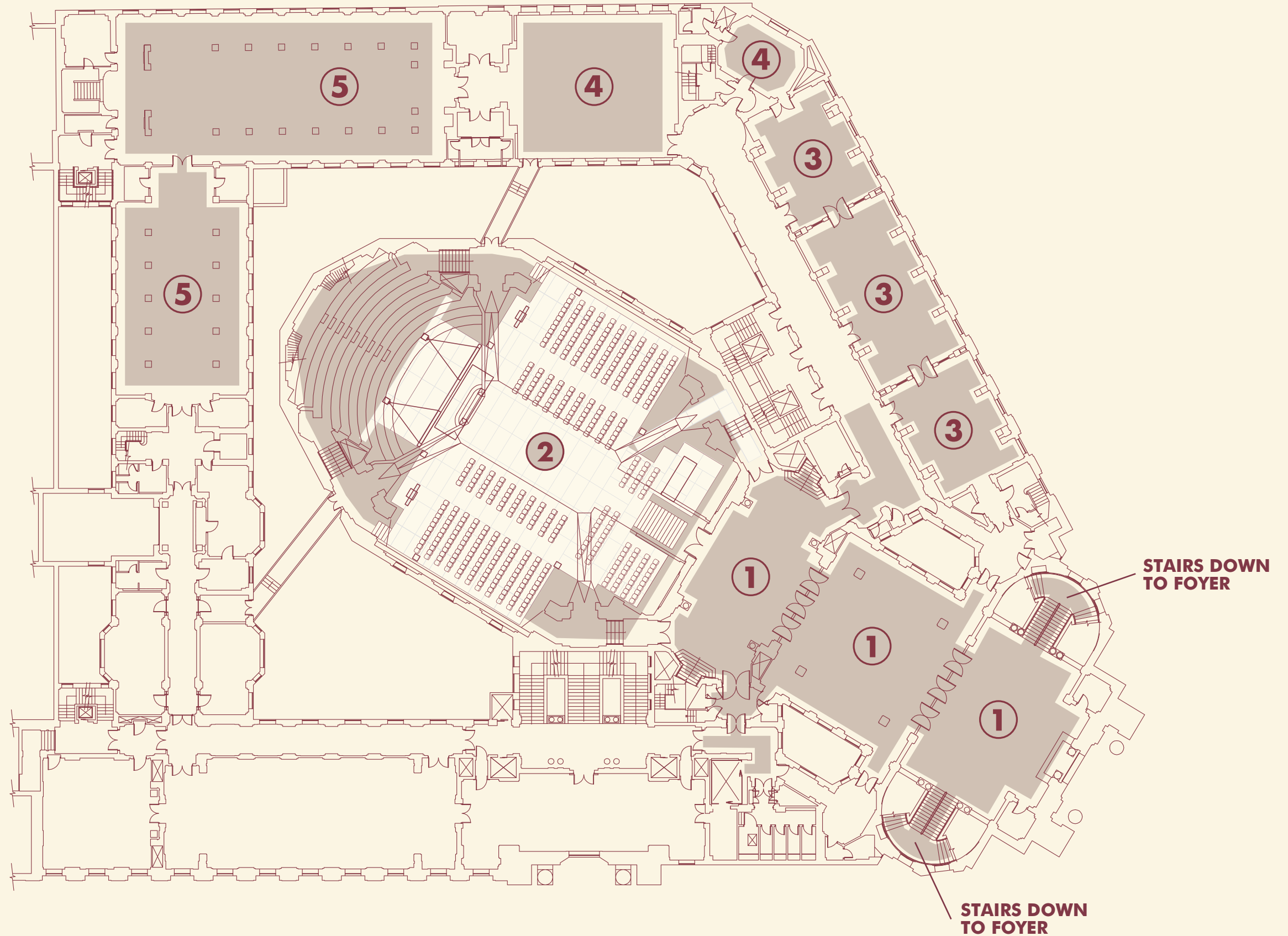


# THE FIRST FLOOR

SPACES AS INSPIRING AS THE IDEAS YOU'RE PRESENTING

The first floor of 60 Great Queen Street reveals a collection of extraordinary spaces, rich in Art Deco elegance. Host your main plenary in the iconic Grand Temple, accessed via the striking Vestibules. Supporting spaces include the Long Room, South Gallery and Grand Officers' Suite, each setting seamlessly blends historic character with contemporary production capabilities.

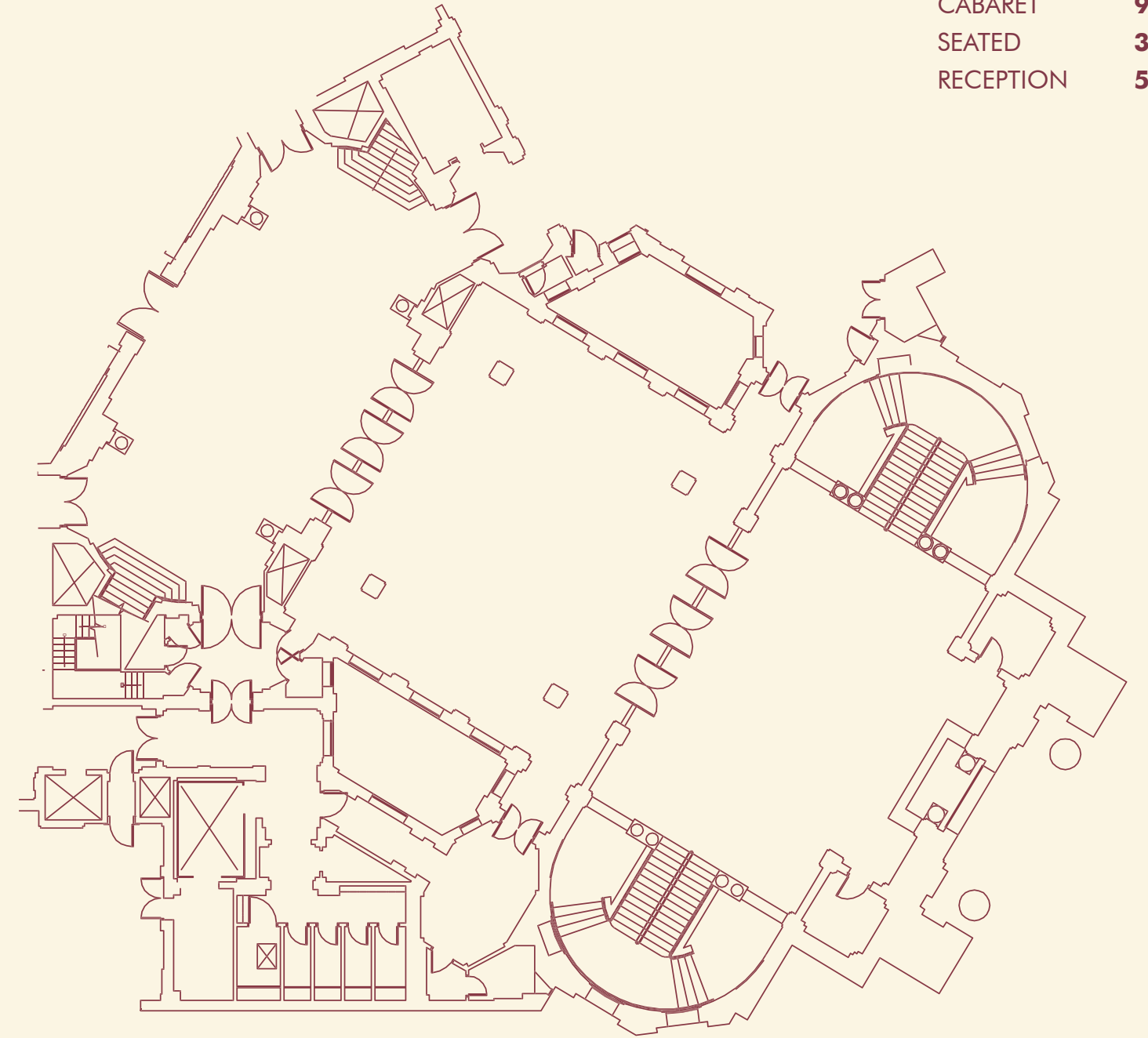
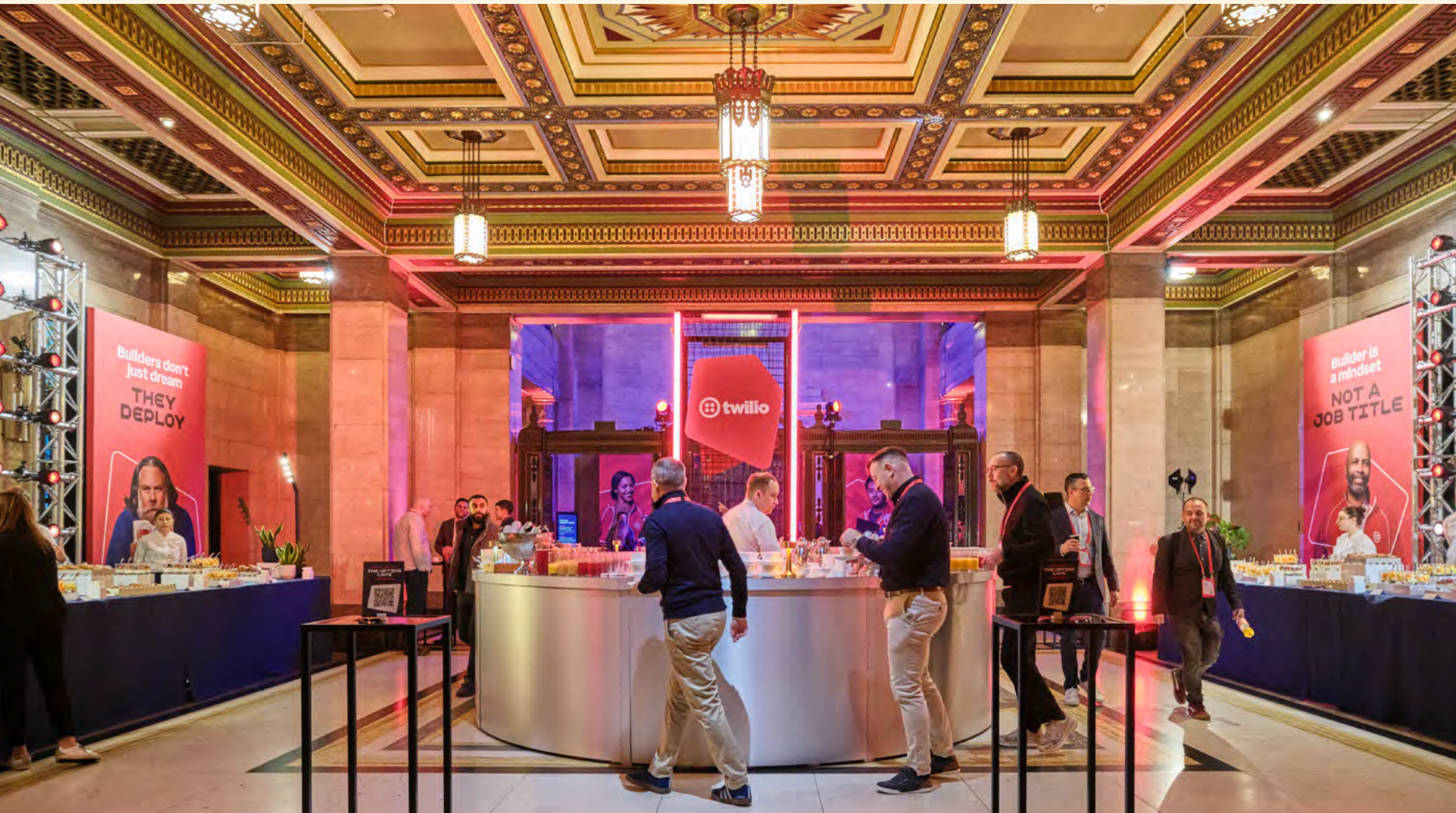
- 1 THE VESTIBULES
- 2 THE GRAND TEMPLE
- 3 THE LONG ROOM
- 4 THE GRAND OFFICERS' SUITE
- 5 THE SOUTH GALLERY



# 1 THE VESTIBULES

USABLE FLOOR SPACE  
**430 M<sup>2</sup>**

CAPACITIES  
THEATRE **150**  
CABARET **96**  
SEATED **300**  
RECEPTION **500**



YOUR DEDICATED  
NETWORKING &  
CATERING HUB

Connected to The Grand Temple, The Vestibules are a stylish and flexible space. With ornate dividing doors, they can easily be split into three separate areas. They work perfectly for catering, networking or hosting activations, while still feeling impressive.



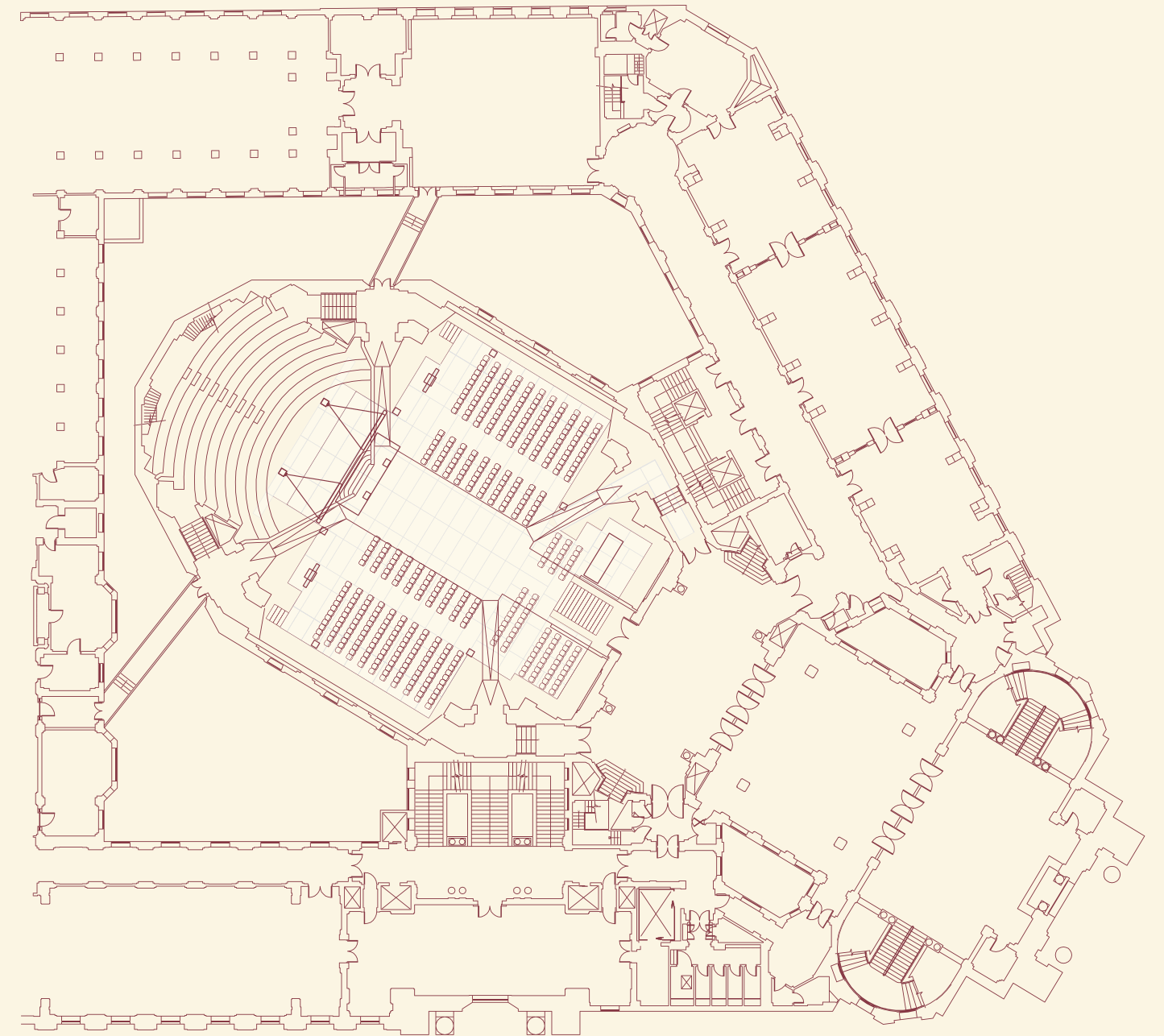
# <sup>2</sup> THE GRAND TEMPLE

USABLE FLOOR SPACE  
**548 M<sup>2</sup>**

CAPACITY  
**UP TO 900**  
THEATRE STYLE

A SPACE LIKE  
NO OTHER, WITH  
ENDLESS POTENTIAL

Host your conference in a space that's impressive in both size and flexibility. With added draping, the room can be tailored to suit events of all sizes, and features like stage extensions for catwalks and the option to build over the fixed seating give you plenty of creative freedom.





THE GRAND TEMPLE

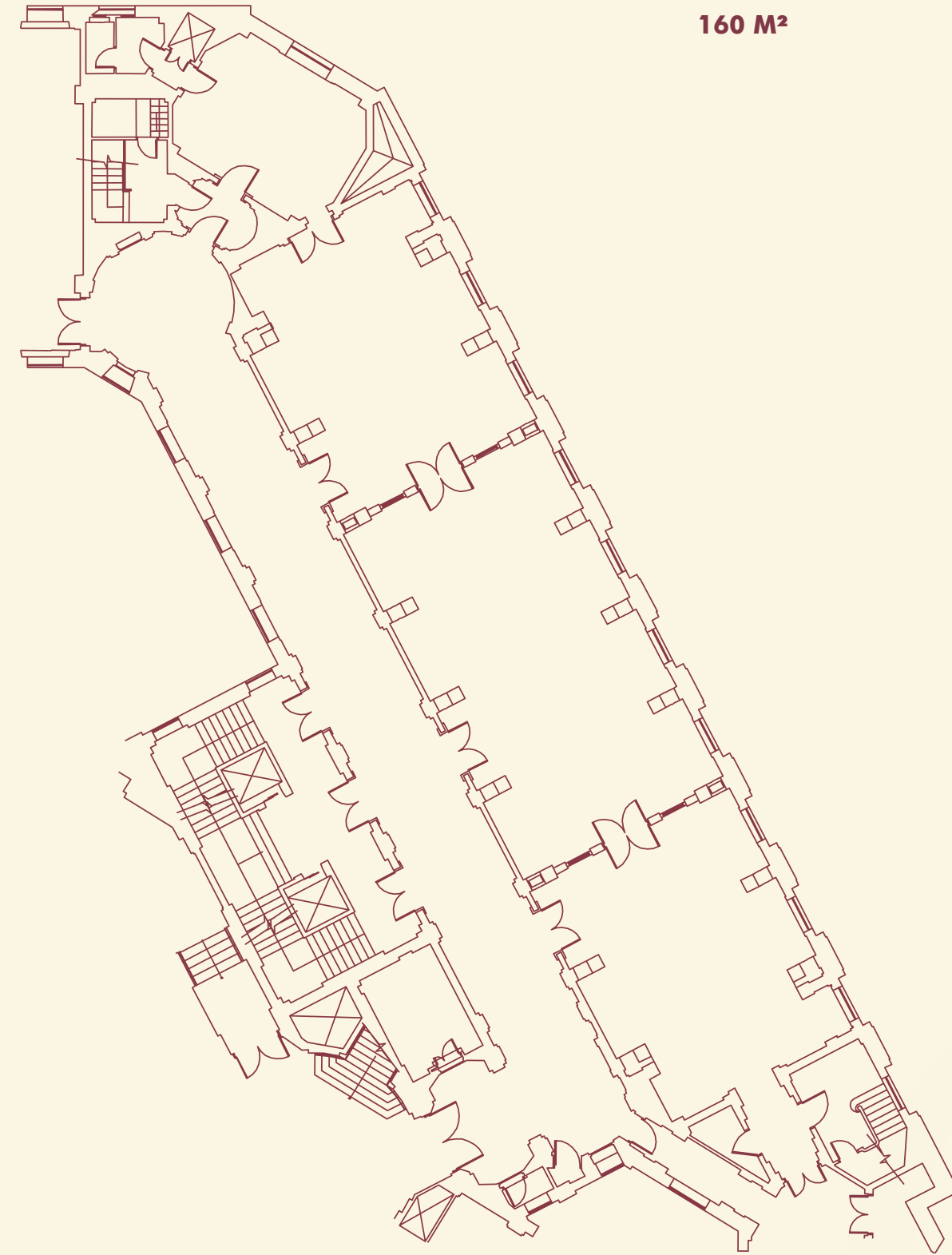
### 3 THE LONG ROOM

The Long Room is perfect for breakout sessions, workshop zones or even a chic speakeasy for post-conference drinks. With its unique character and proximity to The Grand Temple, The Long Room adds a touch of historic charm to any event.



USABLE FLOOR SPACE  
**160 M<sup>2</sup>**

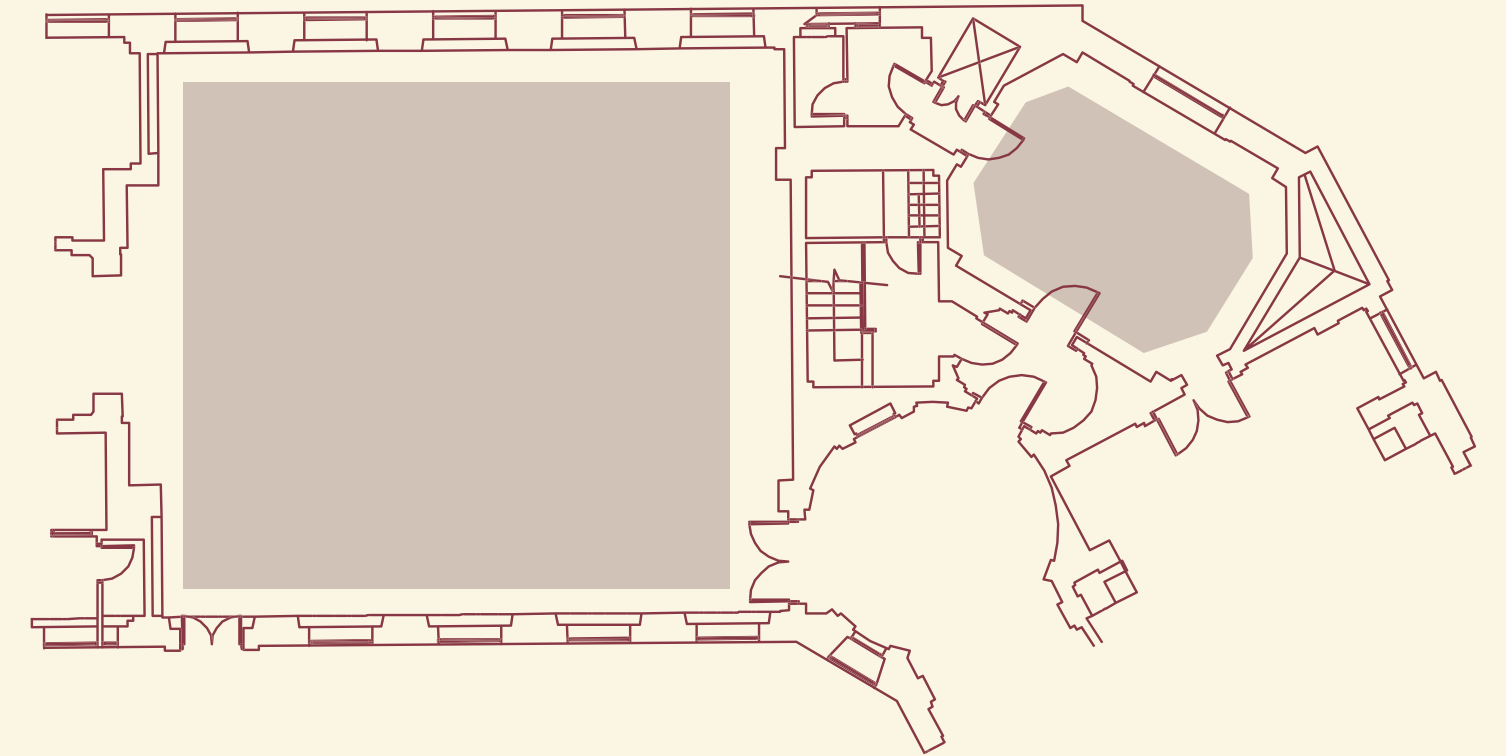
CAPACITIES  
THEATRE **60**  
CABARET **40**  
RECEPTION **120**  
SEATED **50**



# 4 THE GRAND OFFICERS' SUITE

USABLE FLOOR SPACE  
**150 M<sup>2</sup>**

CAPACITIES  
THEATRE **100**  
CABARET **70**  
STANDING **150**  
SEATED **80**



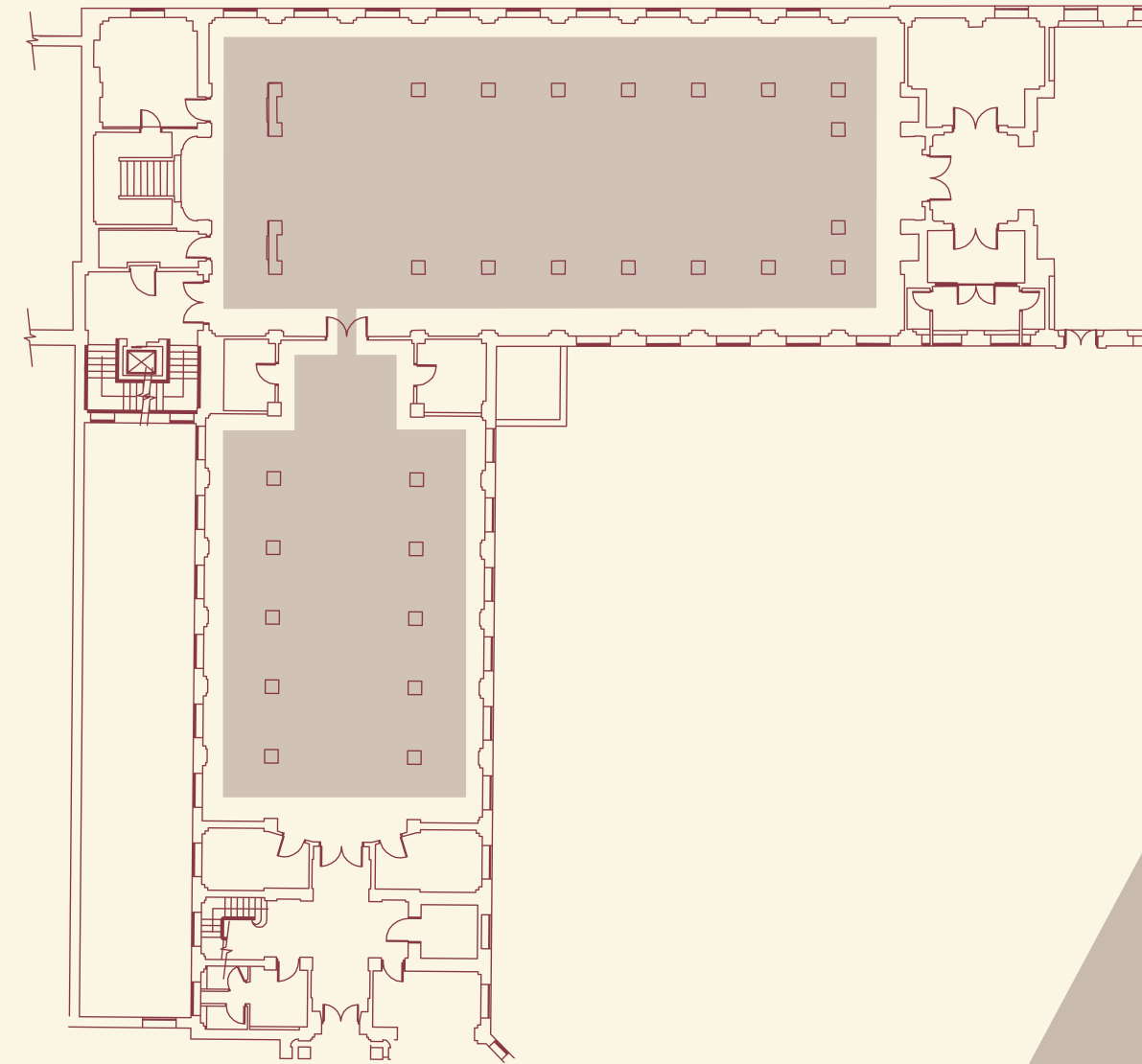
Steeped in history and adorned with exquisite Art Deco detailing, these distinguished spaces exude both prestige and versatility.

Ideal for use as breakout rooms, green rooms or back-of-house catering, the suite supports the seamless flow of larger events while providing a refined, private environment. Whether hosting focused sessions or supporting a wider conference programme, the Grand Officers' Suite delivers both functionality and an enduring sense of sophistication.

# THE SOUTH GALLERY

USABLE FLOOR SPACE  
**210 M<sup>2</sup>**

CAPACITIES  
THEATRE **100**  
CABARET **70**  
RECEPTION **150**  
SEATED **80**



The South Gallery keeps all the charm of its museum heritage. Surrounded by a lovely mezzanine and full of original architectural details, it's a space that feels both full of character and effortlessly elegant.

# THE GALLERY

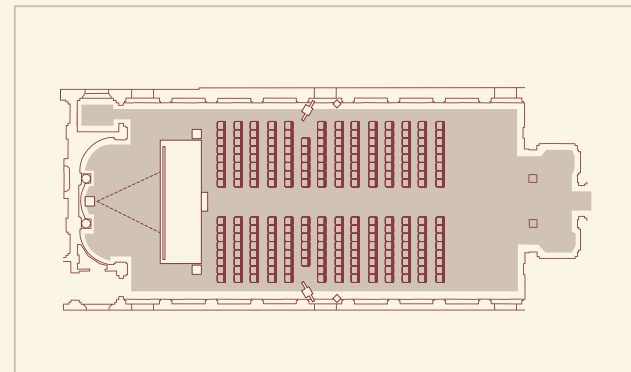
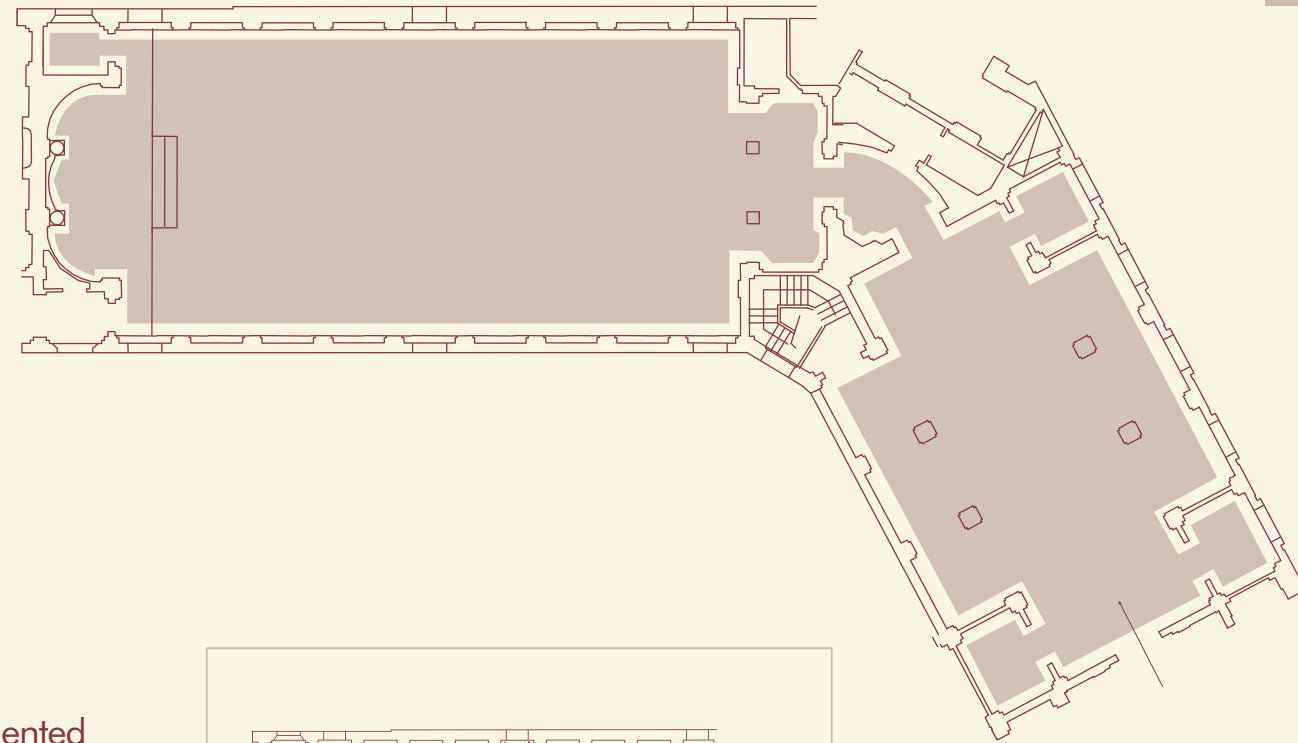
GROUND FLOOR

USABLE FLOOR SPACE

THE GALLERY **270 M<sup>2</sup>**  
 ANTEROOM **185 M<sup>2</sup>**

CAPACITIES

THEATRE **220**  
 CABARET **160**  
 SEATED **220**  
 RECEPTION **350**



The Gallery is an impressive breakout space with abundant natural light and exquisite architectural details. Complemented by the adjoining Ante Room, an ideal space for refreshments and drinks receptions, these ground-floor spaces offer a seamless blend of heritage charm and modern functionality.

Example of production package setup



# WiFi

Reliable connectivity is essential for every successful event. With comprehensive WiFi coverage throughout the building, your delegates can stay seamlessly connected while presentations, streaming, and production run without interruption. Designed to support high-capacity events, our network performance remains uncompromised even with large numbers of connected devices.

## STANDARD OFFERING

### GRAND TEMPLE

- 250mbps max speed
- 6 Access points 4 of which offer up to wifi 7 (2.4/5/6GHz)
- Capacity for up to 700 users
- Single Custom SSID / password to suit event

### VESTIBULES

- 250mbps max speed
- 4 Access points 4 of which offer up to wifi 7 (2.4/5/6GHz)
- Capacity for up to 400 users
- Single Custom SSID / password to suit event

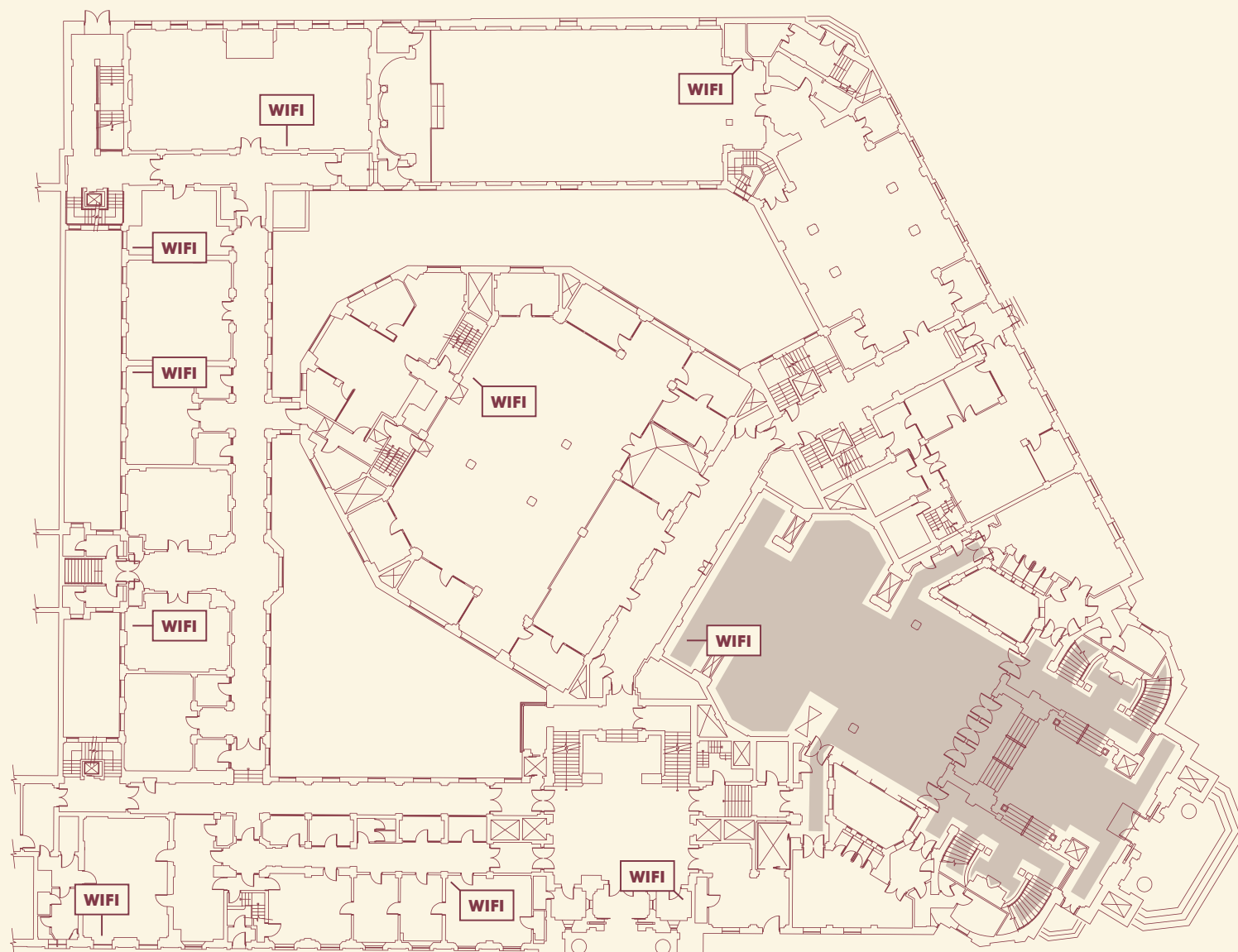
### GALLERY SUITE

- 250mbps max speed
- 3 Access points 4 of which offer up to wifi 7 (2.4/5/6GHz)
- Capacity for up to 250 users
- Single Custom SSID / password to suit event

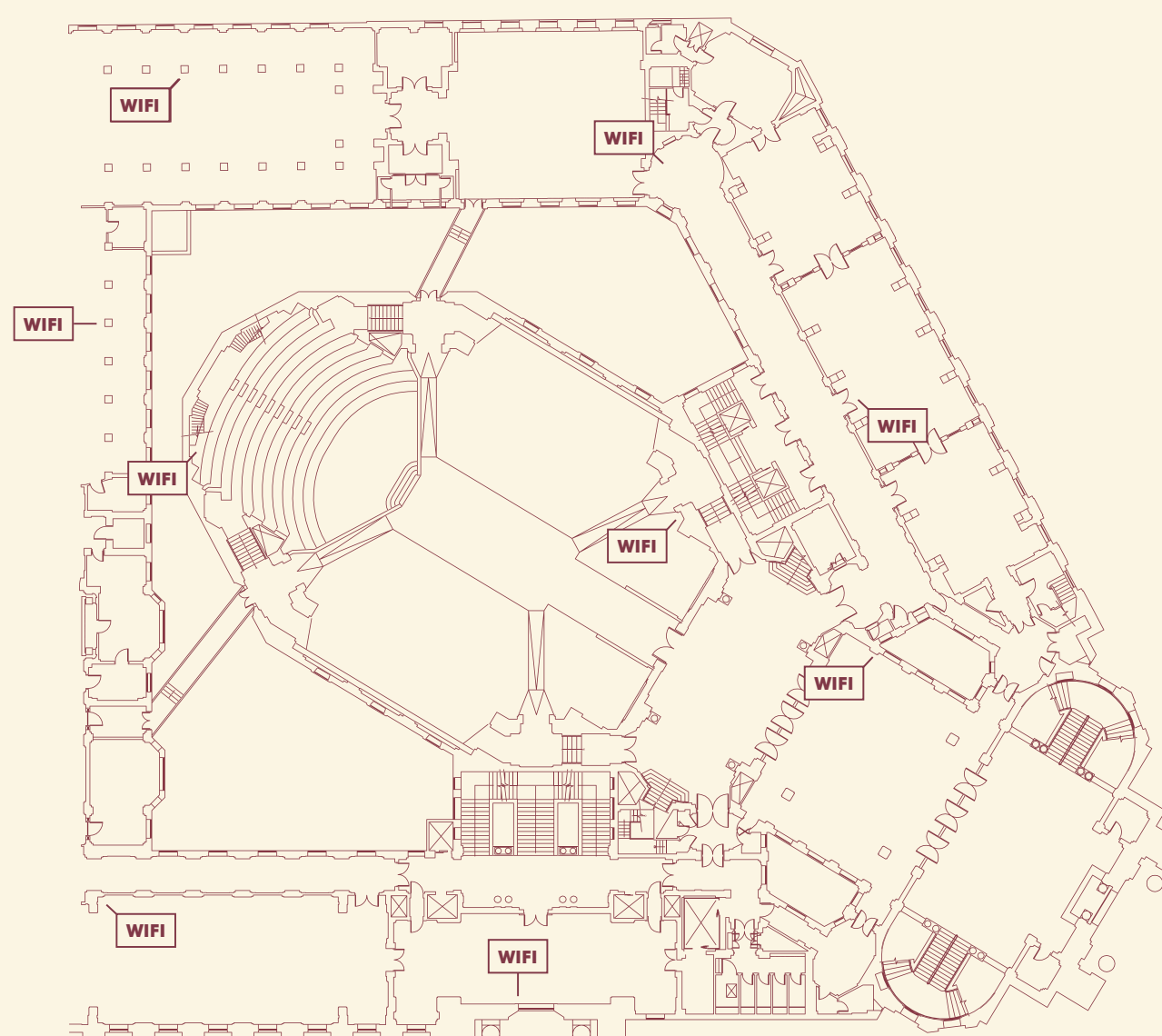
### BESPOKE OPTIONS

- 500mbps max speed upgrade
- 750mbps max speed upgrade
- 1000mbps max speed upgrade
- Multiple SSIDs

## GRAND TEMPLE



## FIRST FLOOR





# HIRE INCLUSIONS

## FIRST FLOOR

### **THE GRAND TEMPLE & ADJOINING ROOMS (VESTIBULES, LONG ROOM, THE GRAND OFFICERS' SUITE, THE TOWER DOORS & FOYER)**

#### Inclusions:

- Grand entrance through the iconic bronze Tower Doors
- Access to the venue from 7am to 11pm
- Late license available until 2am available at an additional cost
- Large heritage cloakroom
- A built-in stage, ideal for presentations, key-note speakers and performances (within the Grand Temple only)
- Fixed conference seating (within the Grand Temple)
- A dedicated Venue and Catering Manager
- Access to our exclusive partners
- Fantastic Wifi

\* Security and cleaning costs are dependent on final numbers and timings

# OUR SUPPLIERS

We are delighted to work alongside a handpicked selection of exceptional suppliers at 60 Great Queen Street. From stunning florists and outstanding catering to first-class entertainment, stylish furniture, and expert production teams, every detail is thoughtfully curated to bring each event to life with elegance and precision. Their passion and creativity ensure that every occasion at 60 Great Queen Street is truly unforgettable.

[VIEW OUR SUPPLIERS HERE](#)



# CATERING

# MOVING VENUE

Moving Venue is 60 Great Queen Street's in-house catering partner and owned by Smart Group. Moving Venue's reputation for delicious food and outstanding excellence has secured this sensational catering company a place on the accredited supplier list of over 40 venues, in and around London.

Driven by creating memorable, delicious catering experiences, our in-house caterers design menus tailored to the style, budget and needs of your event and its guests. From intimate cocktail receptions to immersive conferences, from elegant gala dinners to stunning award ceremonies, their passionate, creative team of chefs devise dishes that your guests will simply love.



All of Moving Venue's menus are carefully considered from field to fork, always with seasonal ingredients, producing bespoke, vibrant and expertly crafted catering at their extraordinary events. They are experienced in ensuring their menus are deliverable for all events whilst ensuring innovation and creativity, using seasonal and sustainable ingredients, is always at the forefront of their creations.

**[movingvenue.com](http://movingvenue.com)**  
**[greatfood@movingvenue.com](mailto:greatfood@movingvenue.com)**  
**movingvenue**





Nestled in the heart of Covent Garden, 60 Great Queen Street offers a prime location amidst London's iconic landmarks, luxury hotels, and excellent transport links. Surrounded by boutique shops, famous theatres, and iconic sights, it provides effortless accessibility with the lively charm of the capital, making it an ideal location for your event.

# LOCATION

60 Great Queen Street  
WC2B 5AZ

Walking distance from:

Holborn Station	4 min
Covent Garden Station	4 min
Leicester Square Station	8 min
Waterloo Station	24 min
Uber Boat at Embankment	17 min

From Heathrow Airport

By train	1 hour
By car	1 hour

# PLANNING YOUR CONFERENCE AT 60 GREAT QUEEN STREET?



## OUR DEDICATED TEAM IS HERE TO ASSIST YOU EVERY STEP OF THE WAY.

Whether you're hosting a grand celebration, corporate gathering, or intimate occasion, we'll tailor every detail to your vision.

Contact us today to explore availability, schedule a site visit, or discuss bespoke packages. Let us help you bring your event to life in this iconic Art Deco setting.



**020 7438 2032**



**[sales@60greatqueenst.co.uk](mailto:sales@60greatqueenst.co.uk)**



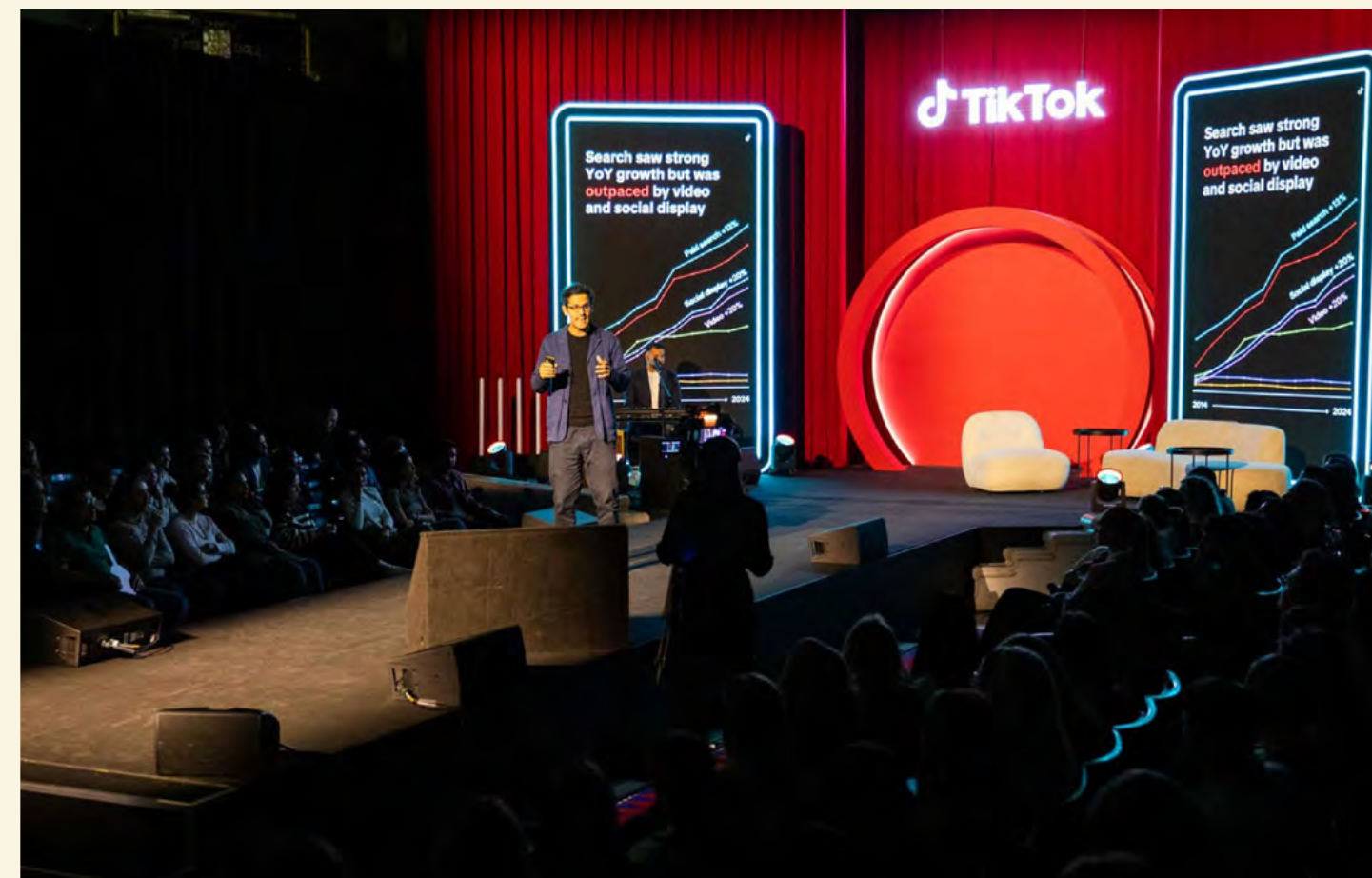
**60 Great Queen St, London WC2B 5AZ**



**@60greatqueenst**



**60-great-queen-street**



60  
GREAT  
QUEEN  
ST.

[60GREATQUEENST.CO.UK](http://60GREATQUEENST.CO.UK)