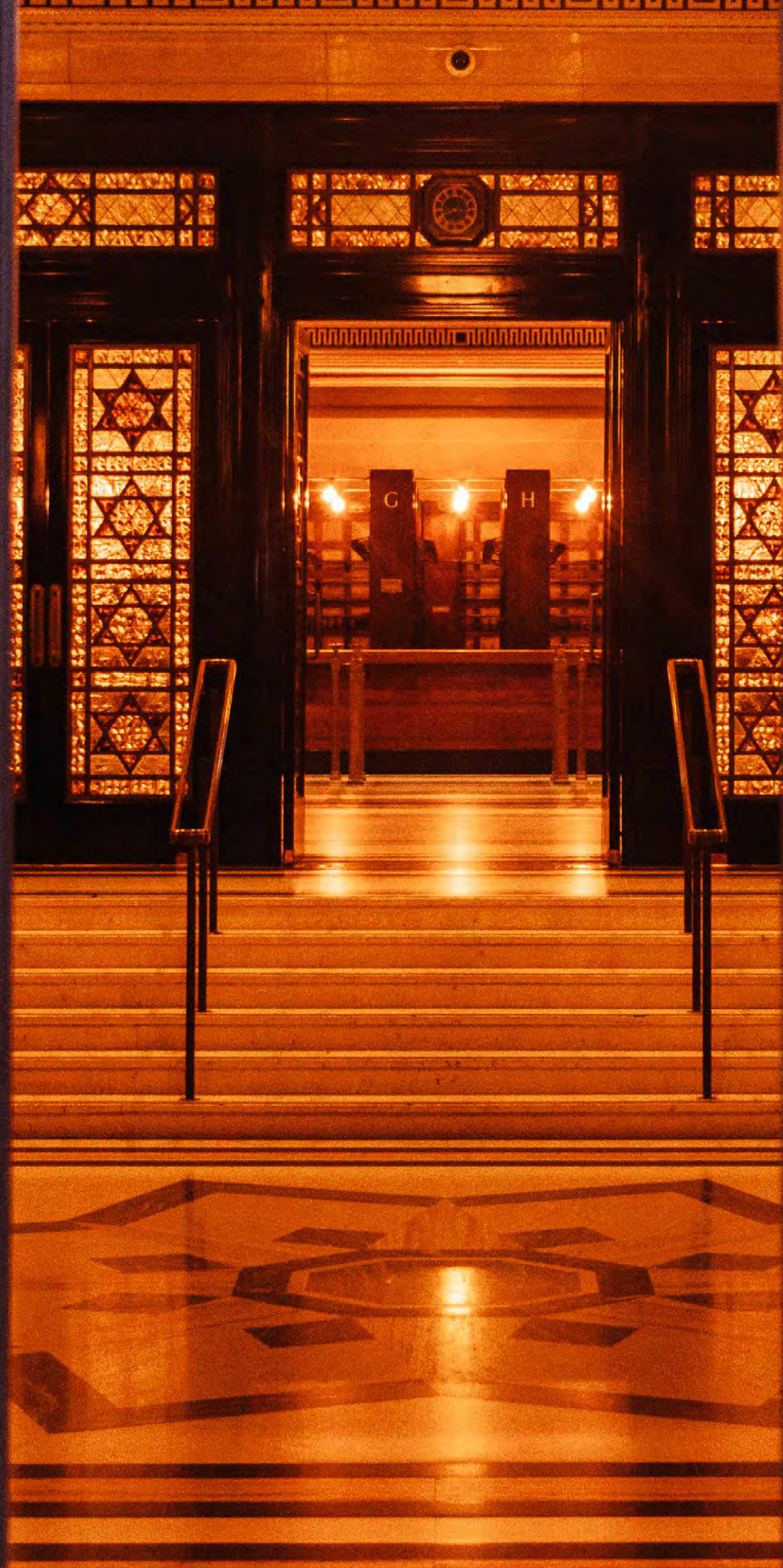


60
GREAT
QUEEN
ST.



AN ICONIC VENUE IN THE HEART OF COVENT GARDEN

INTRODUCTION
03

ABOUT US
04

HISTORY
05

SPACES
08

VENUE HIRE
21

SUPPLIERS
23

SUSTAINABILITY
29

LOCATION
30

CONTACT
31

WELCOME TO

60 GREAT QUEEN ST.

An iconic Art Deco landmark in the heart of Covent Garden, 60 Great Queen Street offers a distinctive setting for corporate events. This Grade II* listed venue combines timeless architectural grandeur with modern event infrastructure.

From high-profile conferences and award ceremonies to product launches, dinners and leadership summits, the venue's versatile spaces are designed to accommodate ambitious event concepts with precision and flexibility.

The awe-inspiring Grand Temple, with its dramatic mosaic ceilings and expansive capacity, provides a striking environment for large-scale productions, while a collection of smaller breakout and reception spaces support networking, workshops and catering. Behind the historic interiors lies a venue built for contemporary event delivery, with extensive production capabilities including advanced AV, dynamic lighting opportunities, staging, rigging access and adaptable technical setups. Combining heritage, scale and cutting-edge event functionality, 60 Great Queen Street delivers a corporate event experience that is both memorable and impeccably produced.

ABOUT US

A LANDMARK DESTINATION FOR EXTRAORDINARY EVENTS

Nestled in the heart of Covent Garden, 60 Great Queen Street is the home of commercial events at Freemasons' Hall. Completed in 1933 as the home of the United Grand Lodge of England, this striking Art Deco masterpiece was purpose-built to host meetings and events, a tradition that continues to this day.

With 10 versatile spaces available for hire, accommodating anywhere from 40 - 900 guests, the venue offers a distinctive backdrop for an array of events. From conferences, award ceremonies, and gala dinners to fashion shows, creative performances, and weddings, every occasion is elevated by the building's architectural magnificence and timeless elegance.



HISTORY

A LEGACY OF KNOWLEDGE AND PHILANTHROPY

Since 1775, 60 Great Queen Street has been a gathering place for Freemasons, an institution built on knowledge, tradition, and philanthropy. The current building, completed in 1933, is a monument to those who lost their lives in World War I and was initially named the Masonic Peace Memorial. Remarkably, it was funded entirely by Freemason Lodges across the country, a testament to the fraternity's unity and commitment.

Freemasonry traces its origins to the world of stonemasonry, where early members possessed expertise in building and geometry. Over time, it evolved into a society renowned for travel, knowledge sharing, and fraternity. Many distinguished historical figures were Freemasons, including Sir Christopher Wren, the visionary architect of St. Paul's Cathedral,

and Sir Winston Churchill, Britain's wartime Prime Minister.

Freemasonry is an inclusive and diverse organisation with no political or religious affiliations and welcomes members of all ages, races, religions, and backgrounds. Its core values — Integrity, Friendship, Respect, and Service—are complemented by a deep commitment to charity. In 2025 alone, fundraising initiatives included a sponsored climb of Mount Kilimanjaro (featuring the oldest participant ever to reach the summit at 82 years old!) and a lawnmower ride from Land's End to John O'Groats, with efforts contributing to raising £9.7 million for charities over the year, supporting disadvantaged young people, communities in crisis, and programmes that help older people thrive.



WHY 60 GREAT QUEEN STREET?



PRIME CENTRAL LONDON LOCATION

Ideally situated in Covent Garden, our venue offers unparalleled accessibility and prestige in the heart of the city.



LICENSE UNTIL 2AM

Continue your event late into the night with a late license until 2am.



FLEXIBLE SPACES WITH SCALABLE CAPACITIES

Our versatile rooms accommodate events of all sizes, from intimate gatherings to grand celebrations, offering seamless adaptability for any occasion.



RICH HISTORIC SIGNIFICANCE

A striking Art Deco landmark, our venue exudes timeless elegance and a storied heritage that elevates any occasion.



OUTSTANDING ACOUSTICS

From intimate gatherings to electrifying live performances, every note arrives exactly as intended. With a dynamic range reaching 107dB, the sound system delivers concert-hall presence.



EXQUISITE CATERING

Indulge in exquisite catering curated by Moving Venue, London's most experienced and renowned event caterer.

PERFECT FOR...



AWARDS CEREMONIES

Celebrate excellence in an iconic and unforgettable setting.



CELEBRATIONS

Celebrate life's unforgettable moments in a venue as extraordinary and meaningful as the occasion.



CONFERENCES

Ignite inspiration and creativity in a setting of grandeur and prestige.



DINNERS & RECEPTIONS

From fine dining to lively drinks receptions within timeless settings.



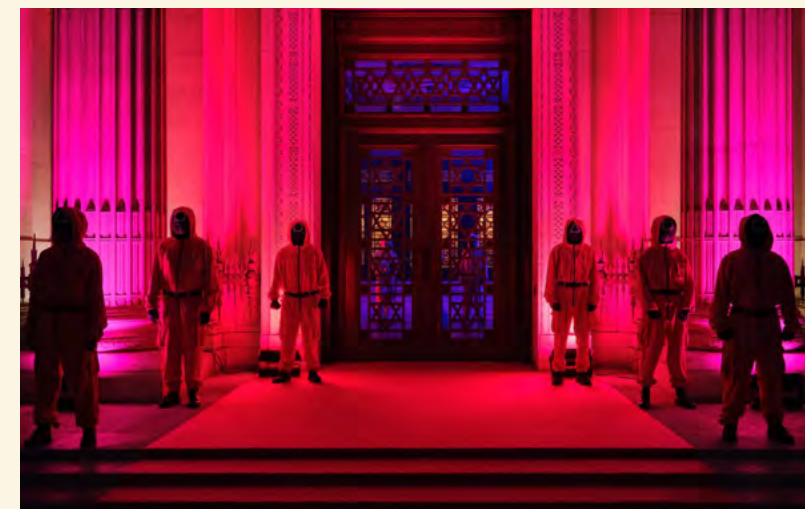
FASHION SHOWS

A runway set amidst elegance and charm.



FILMING

Capture a scene within architectural grandeur.



PRODUCT LAUNCHES

Bring your brand to life in a venue designed to captivate.



SEASONAL PARTIES

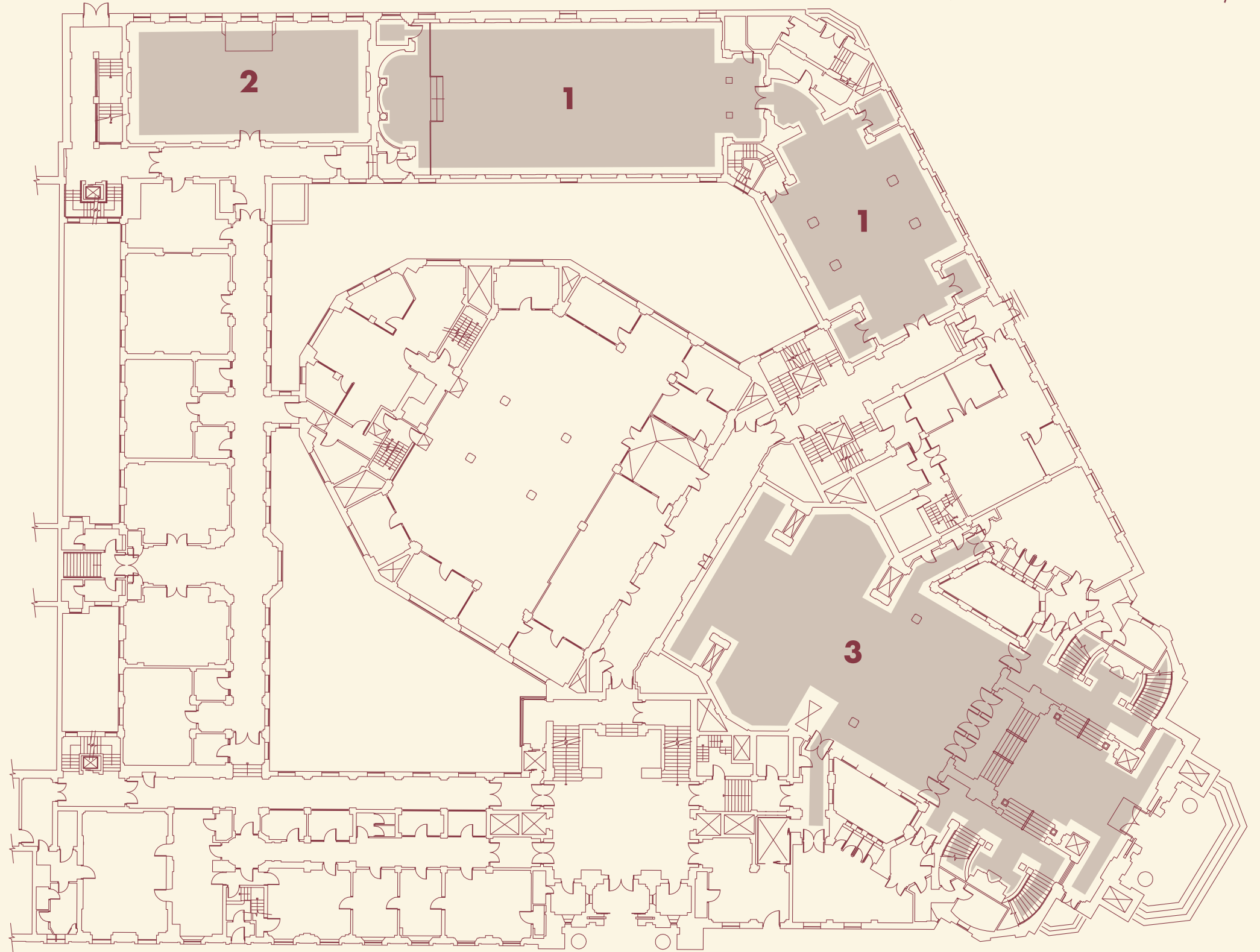
Celebrate the season within elegant settings.

THE GROUND FLOOR

WHERE HERITAGE MEETS
MODERN PRODUCTION
CAPABILITIES

The ground floor boasts a selection of breathtaking spaces available for hire, each steeped in Art Deco elegance and historic charm.

- 1 THE GALLERY & ANTEROOM**
- 2 THE OLD BOARDROOM**
- 3 THE TOWER DOORS & FOYER**
(SPACE INCLUDED WHEN BOOKING
THE VESTIBULES OR GRAND TEMPLE)

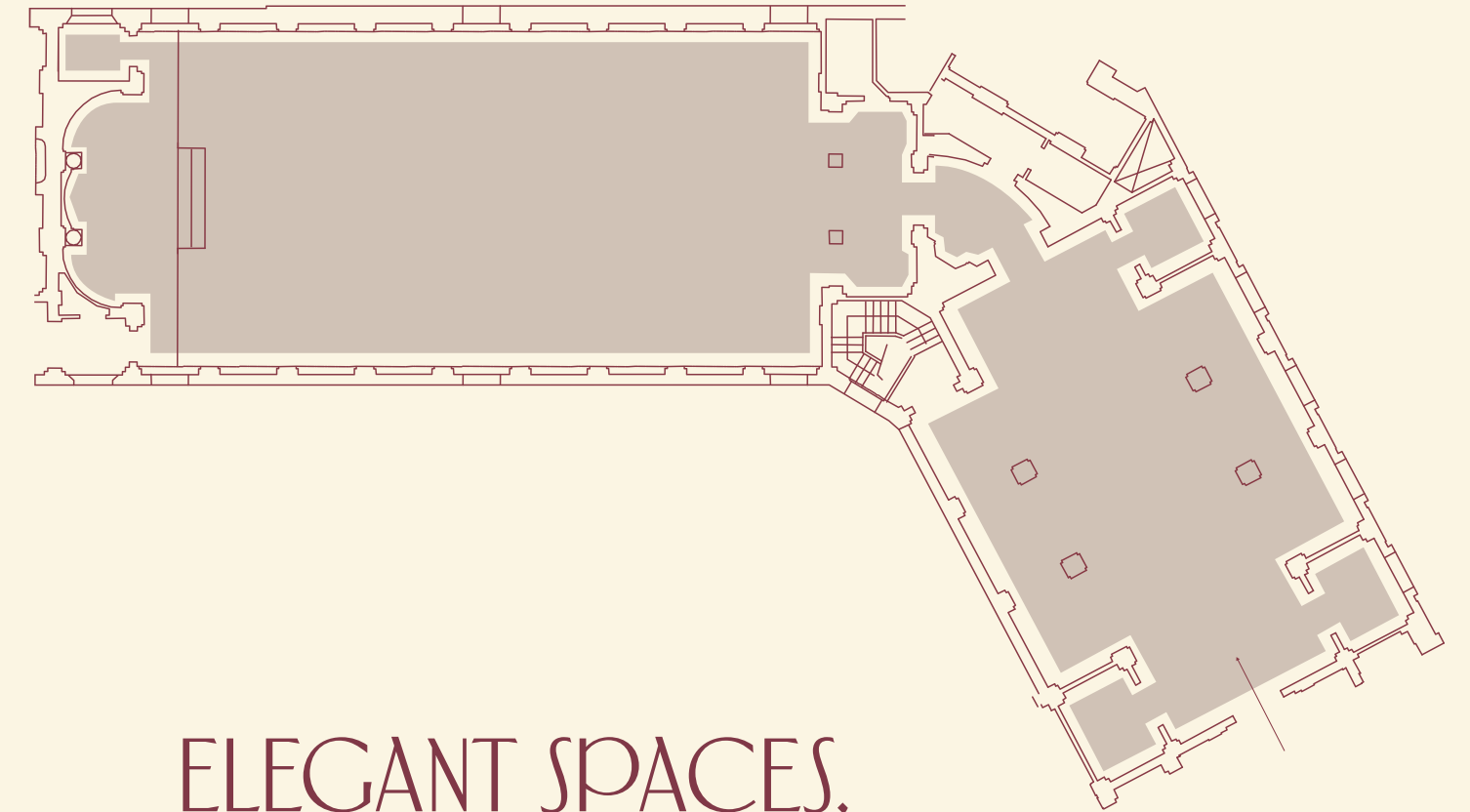


1 THE GALLERY & ANTEROOM

GALLERY
270 M²

ANTEROOM
185 M²

CAPACITIES
THEATRE **220**
CABARET **160**
SEATED **220**
RECEPTION **350**



ELEGANT SPACES, FLAWLESS EVENTS

The Gallery, with its high ceilings, abundant natural light, and exquisite architectural details, provides a captivating setting for any occasion. Complemented by the adjoining Anteroom, an ideal space for refreshments and drinks receptions, these ground-floor spaces offer a seamless blend of heritage charm and modern functionality.

Perfect for: Conferences, dinners, receptions: and a breakout space for 1st floor events

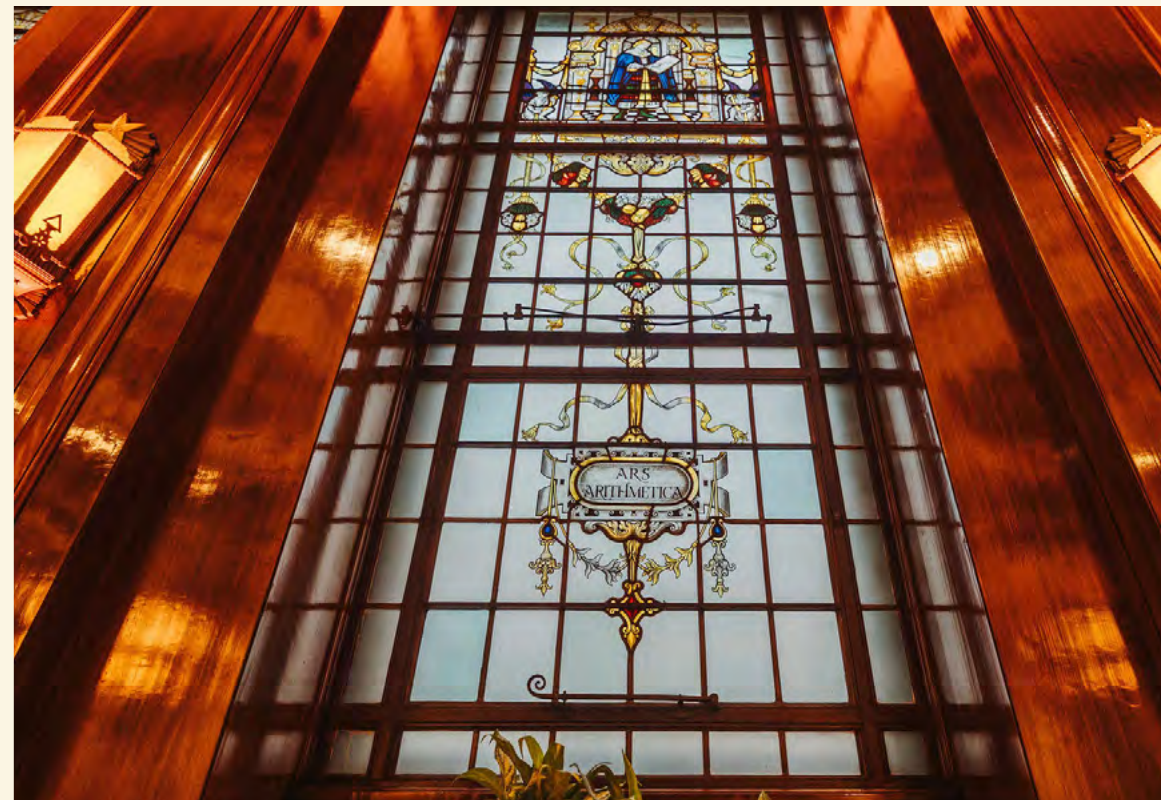
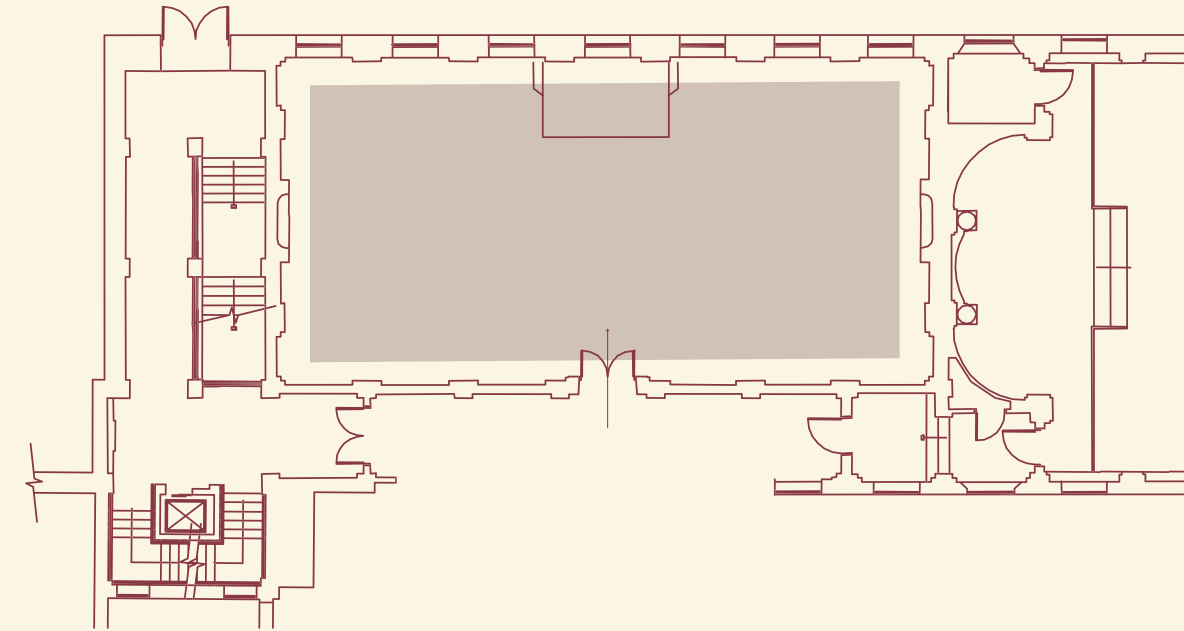
2 THE OLD BOARDROOM

TIMELESS CHARM MEETS
VERSATILE FUNCTIONALITY

Adjacent to The Gallery, The Old Boardroom offers a versatile and distinguished setting for breakout sessions, workshops, or catering needs.

USABLE FLOOR SPACE
168 M²

CAPACITIES
THEATRE **60**
CABARET **60**
SEATED **60**
RECEPTION **60**



3 THE TOWER DOORS & FOYER

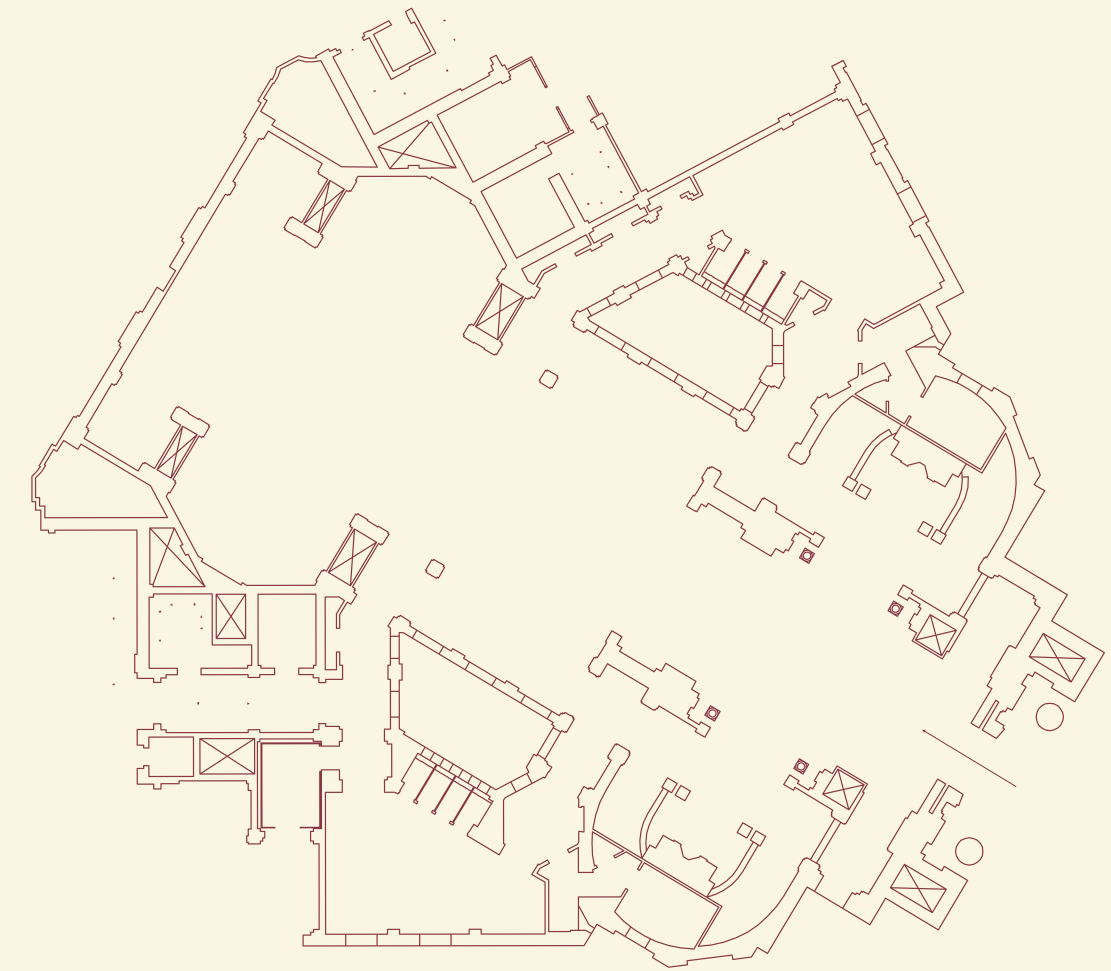
USABLE FLOOR SPACE
120 M²

CAPACITIES
THEATRE **100**
CABARET **80**
SEATED **80**
STANDING **200**

AN ICONIC
ENTRANCE LEADING
TO EXTRAORDINARY
EVENT SPACES

The iconic bronze doors, a recognisable landmark in the heart of Covent Garden, are only open exclusively to 60 Great Queen Street guests. Beyond these striking doors lies a marble entrance hall, leading to the original cloakroom.

The Tower Doors and Foyer are exclusively available for events held in The Grand Temple and The Vestibules.

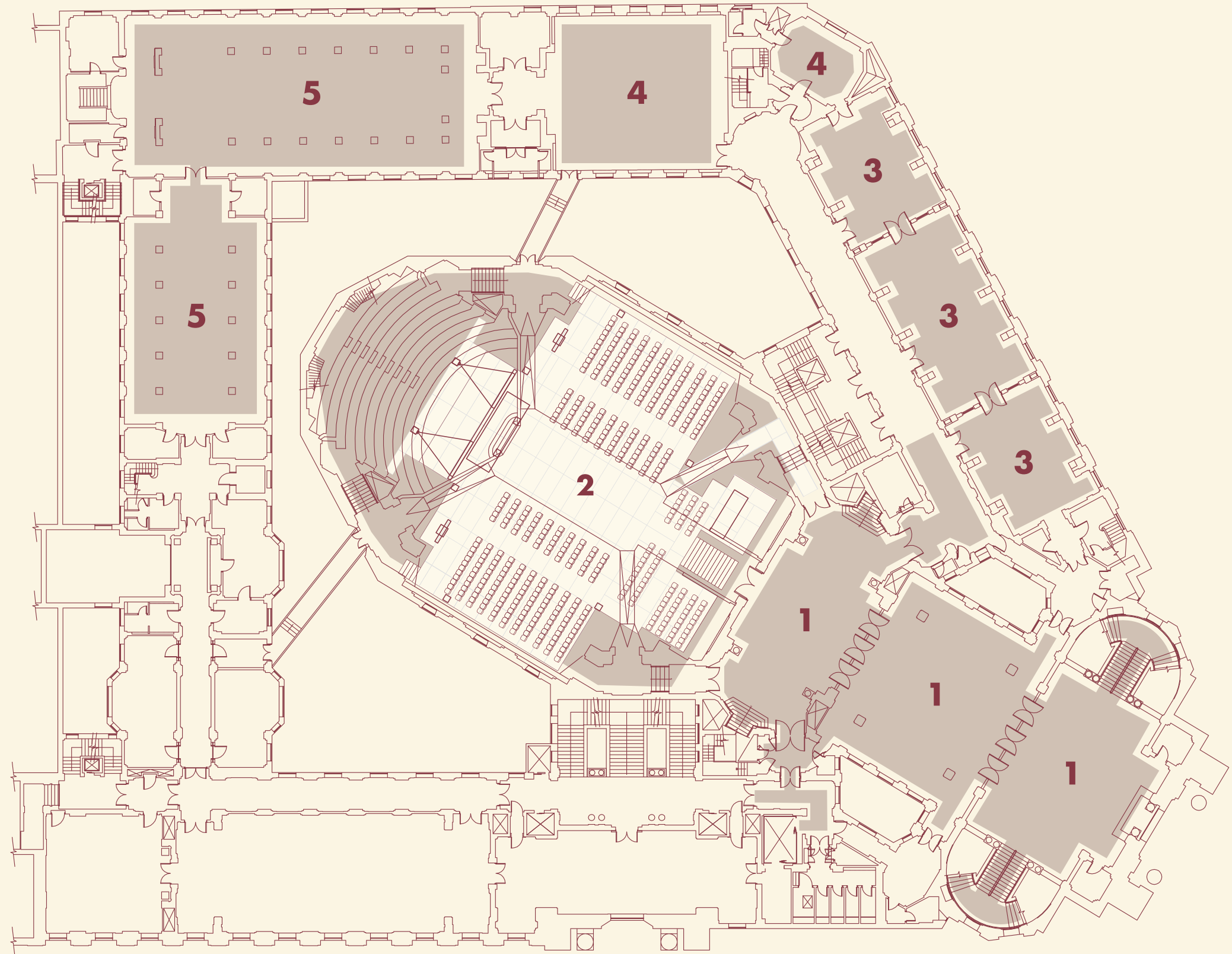


THE FIRST FLOOR

UNVEILING TIMELESS GRANDEUR

The first floor of 60 Great Queen Street reveals a collection of extraordinary spaces, rich in Art Deco elegance. Most notably the iconic Grand Temple, accessed via the striking Vestibules. Supporting spaces include The Long Room, South Gallery and Grand Officers' Suite, each setting seamlessly blends historic character with contemporary production capabilities.

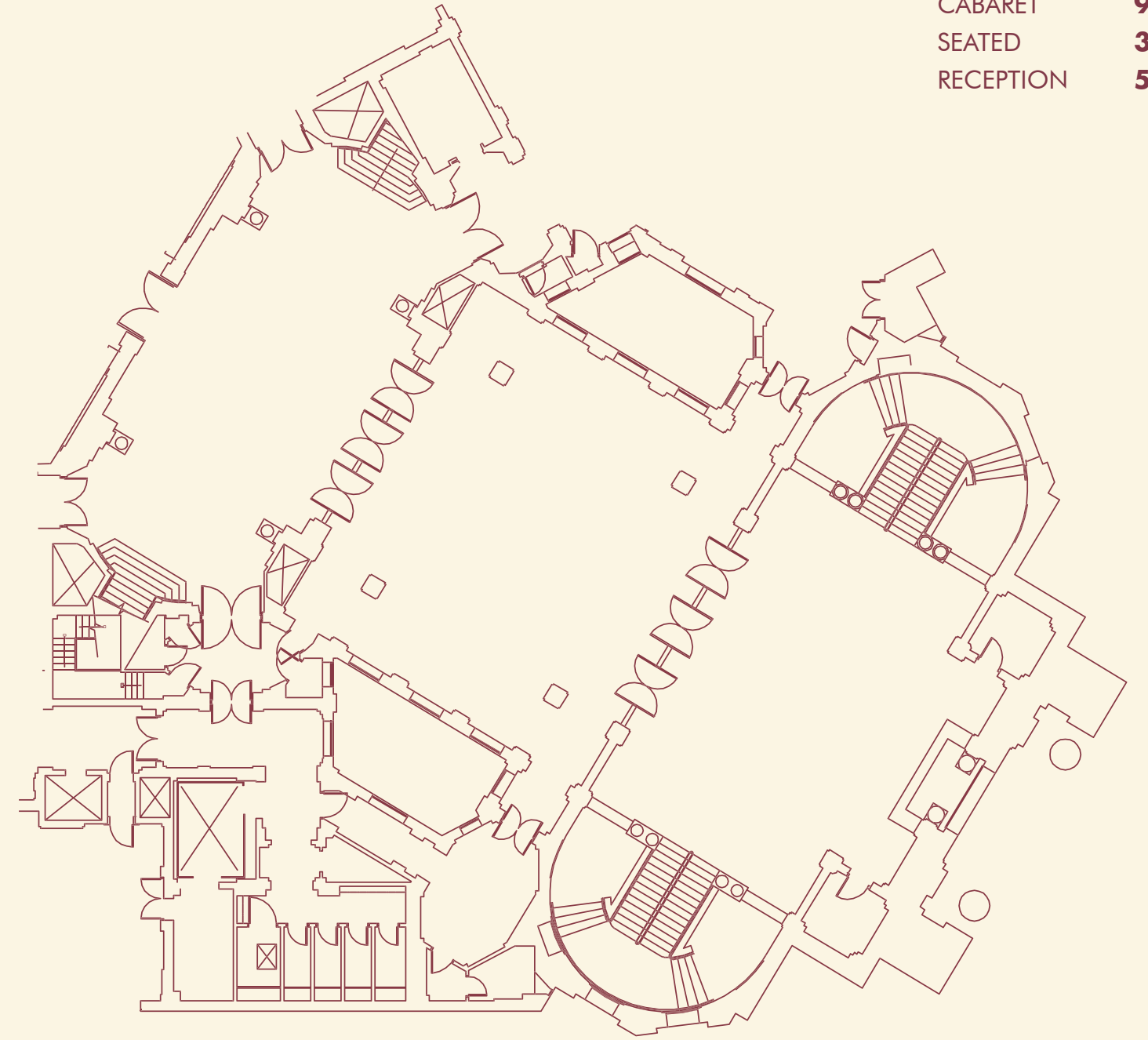
- 1 THE VESTIBULES
- 2 THE GRAND TEMPLE
- 3 THE LONG ROOM
- 4 THE GRAND OFFICERS' SUITE
- 5 THE SOUTH GALLERY



1 THE VESTIBULES

USABLE FLOOR SPACE
430 M²

CAPACITIES
 THEATRE **150**
 CABARET **96**
 SEATED **300**
 RECEPTION **500**



WHERE SOPHISTICATION
 MEETS VERSATILITY FOR
 EVERY GRAND OCCASION

Available for exclusive hire, this remarkable space effortlessly transforms into three distinct areas using ornate dividing doors. Accessible solely through The Tower Doors and a sweeping marble staircase, The Vestibules offer a versatile and opulent setting.

Perfect for: parties, dinners, catering for conferences, receptions, filming, and fashion shows



2 THE GRAND TEMPLE

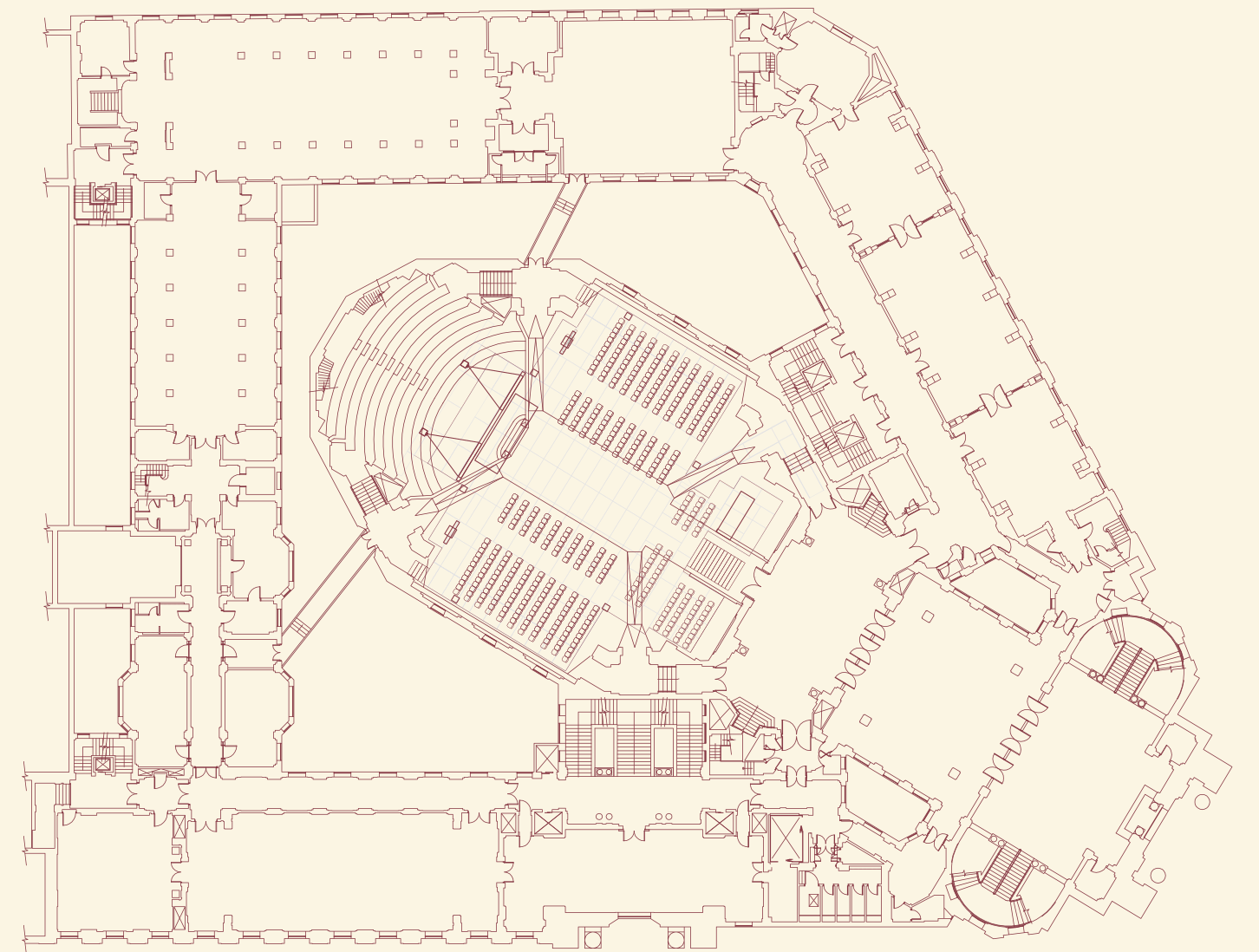
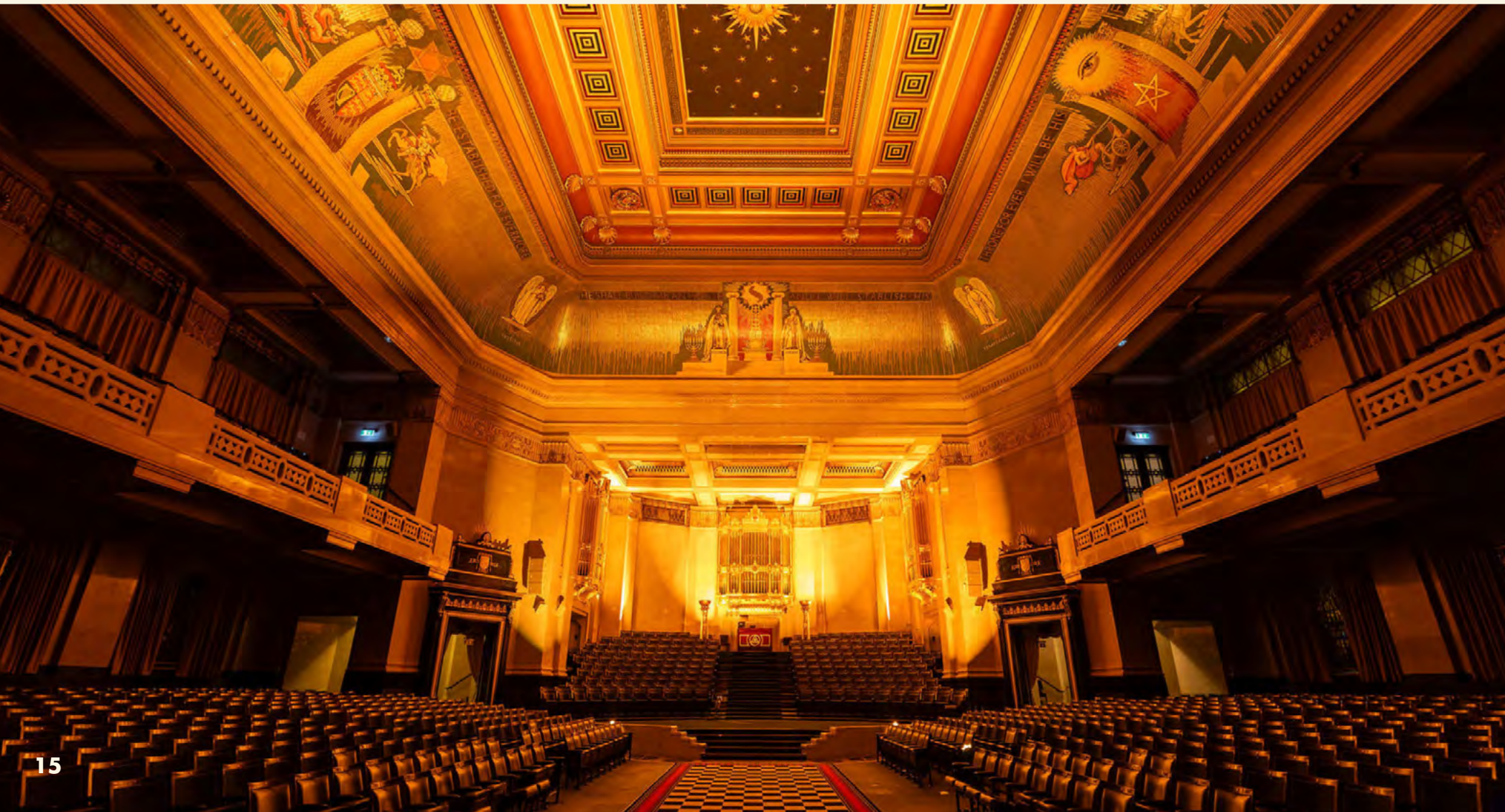
AN EVENT SPACE LIKE NO OTHER

Immerse yourself in the awe-inspiring grandeur of The Grand Temple featuring a meticulously handcrafted mosaic ceiling. The space includes access to adjoining rooms, offering a flexible and dynamic space.

Perfect for conferences, exhibitions, awards ceremonies, graduations and fashion shows

USABLE FLOOR SPACE
548 M²

CAPACITIES
THEATRE **900**





HE SHALL BUILD ME AN HOUSE AND I WILL DWELL IN HIS



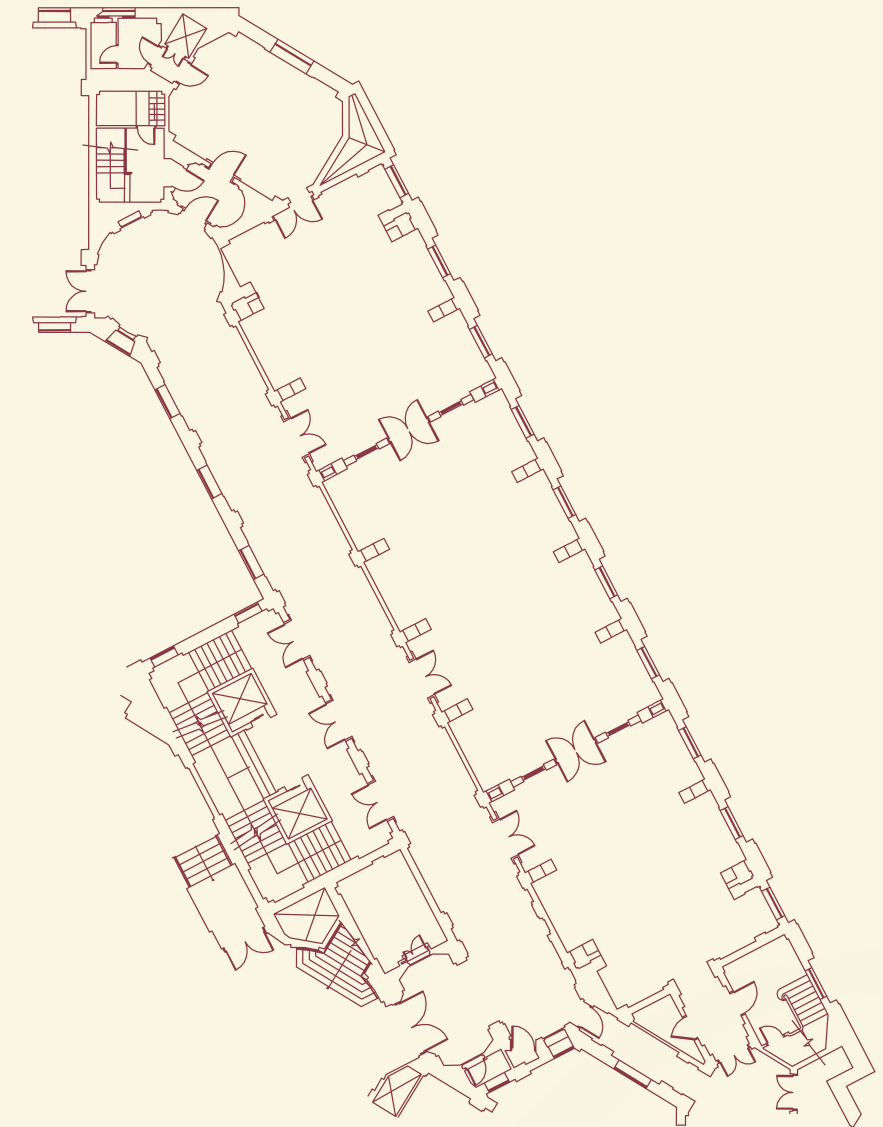
3 THE LONG ROOM

A FLEXIBLE SPACE,
ADJACENT TO
THE VESTIBULES

The Long Room offers a versatile setting adjoining The Grand Temple that seamlessly blends elegance with functionality. This ornate space is perfect for breakout sessions, workshop zones, or even a chic speakeasy, making it an exceptional choice for creating memorable experiences. With its unique character and proximity to The Grand Temple, The Long Room adds a touch of historic charm to any event.

USABLE FLOOR SPACE
160 M²

CAPACITIES
THEATRE **60**
CABARET **40**
RECEPTION **120**
SEATED **50**

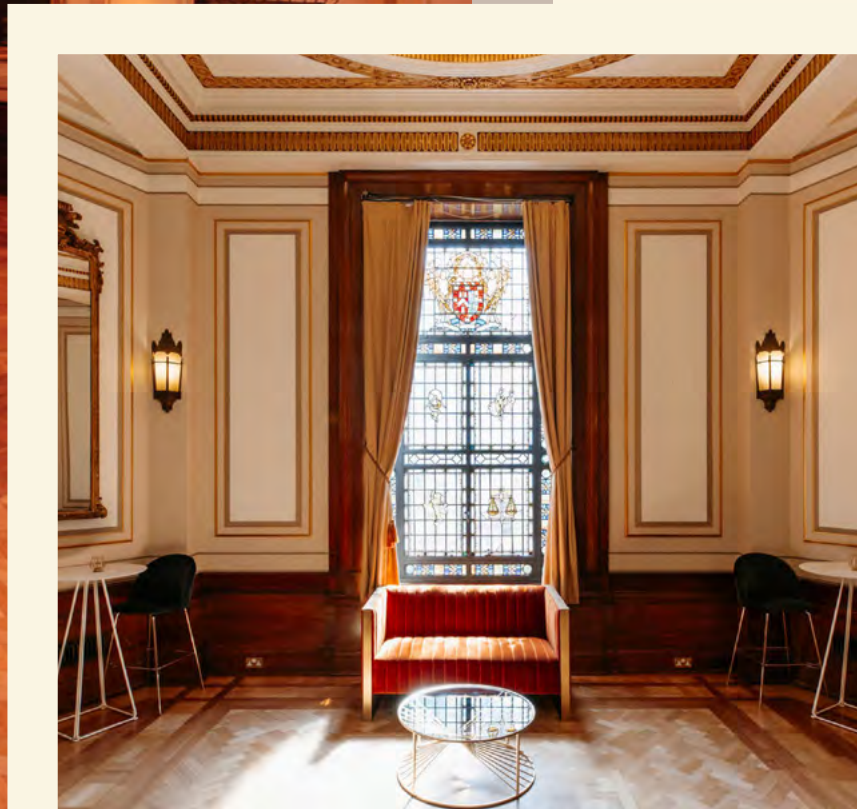
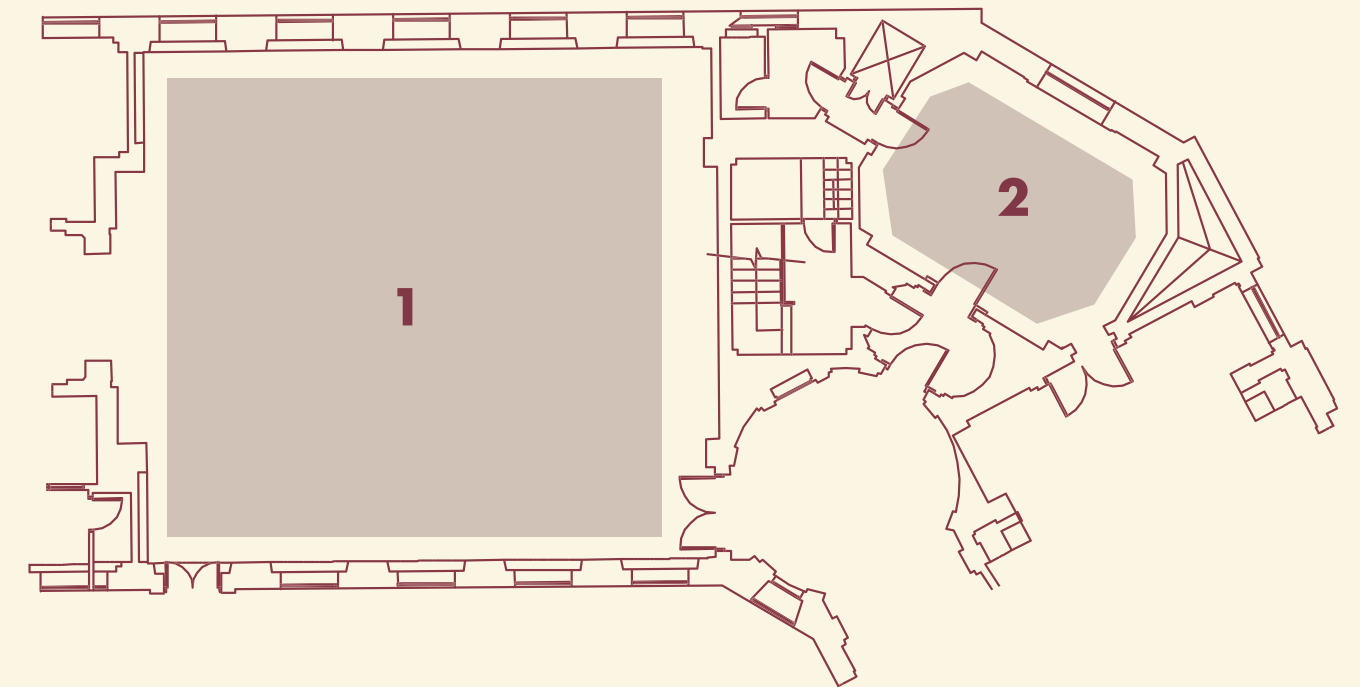
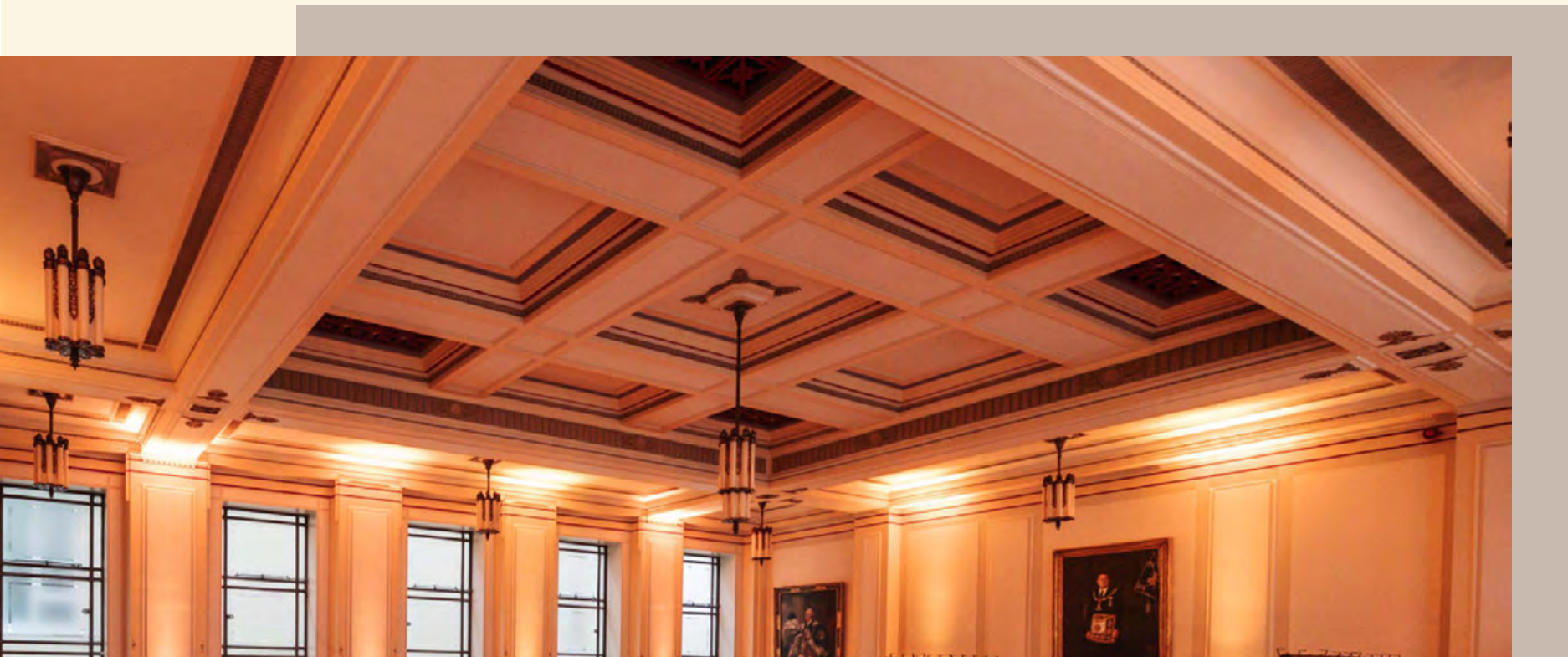


4 THE GRAND OFFICERS' SUITE

- 1 THE GRAND OFFICERS
- 2 THE GREEN ROOM

USABLE FLOOR SPACE
150 M²

CAPACITIES	
THEATRE	100
CABARET	70
STANDING	150
SEATED	80



Offering an intimate yet impressive setting for high-profile events, the Grand Officers' Suite is an elevated backstage space that combines heritage, privacy and sophistication.

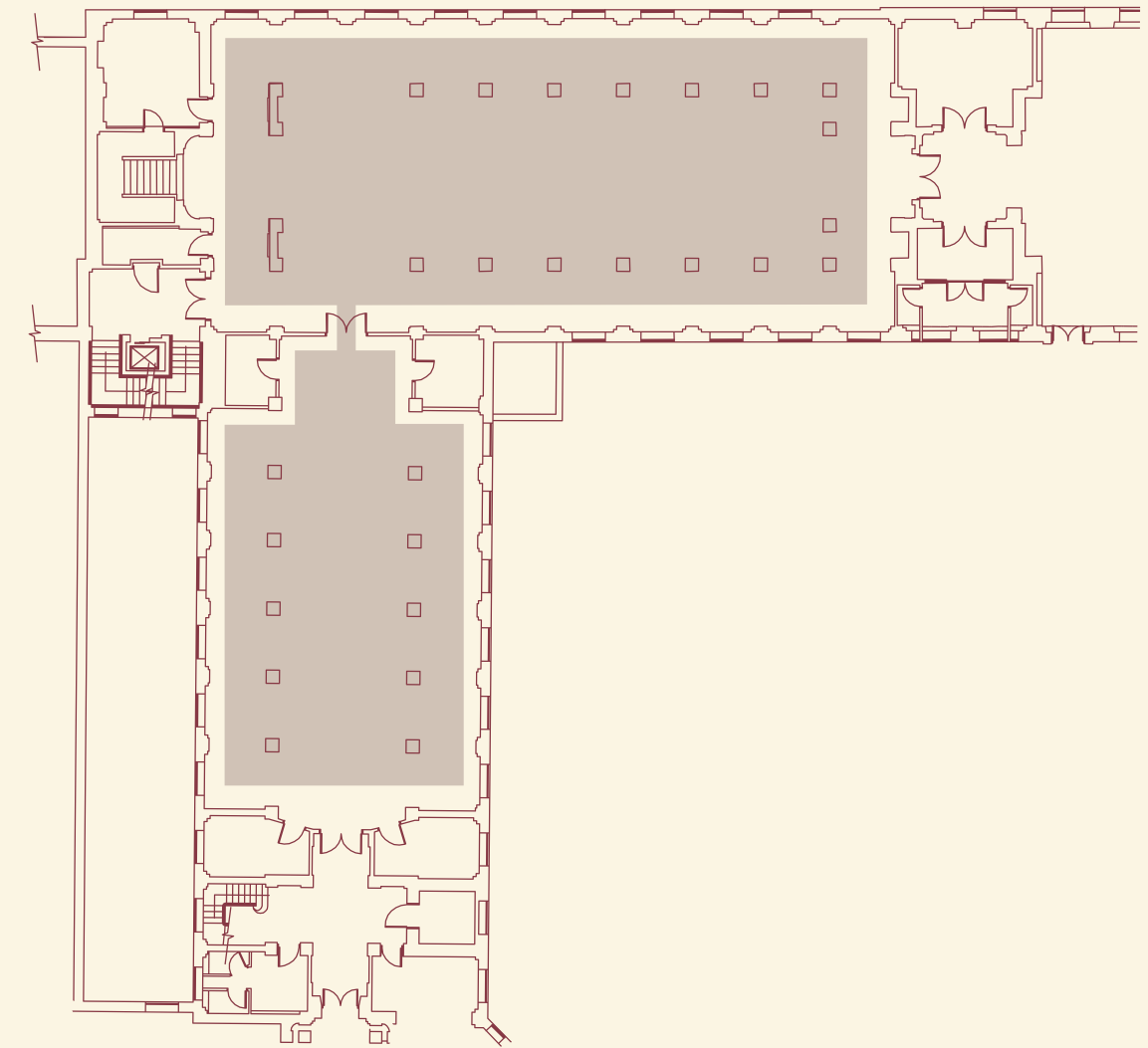
With direct access to the Grand Temple, these spaces are ideally suited as an exclusive green room for speakers, performers or VIP guests, while also serving as a premium breakout space for larger conferences and events.

5 THE SOUTH GALLERY



USABLE FLOOR SPACE
210 M²

CAPACITIES
THEATRE **100**
CABARET **70**
RECEPTION **150**
SEATED **80**



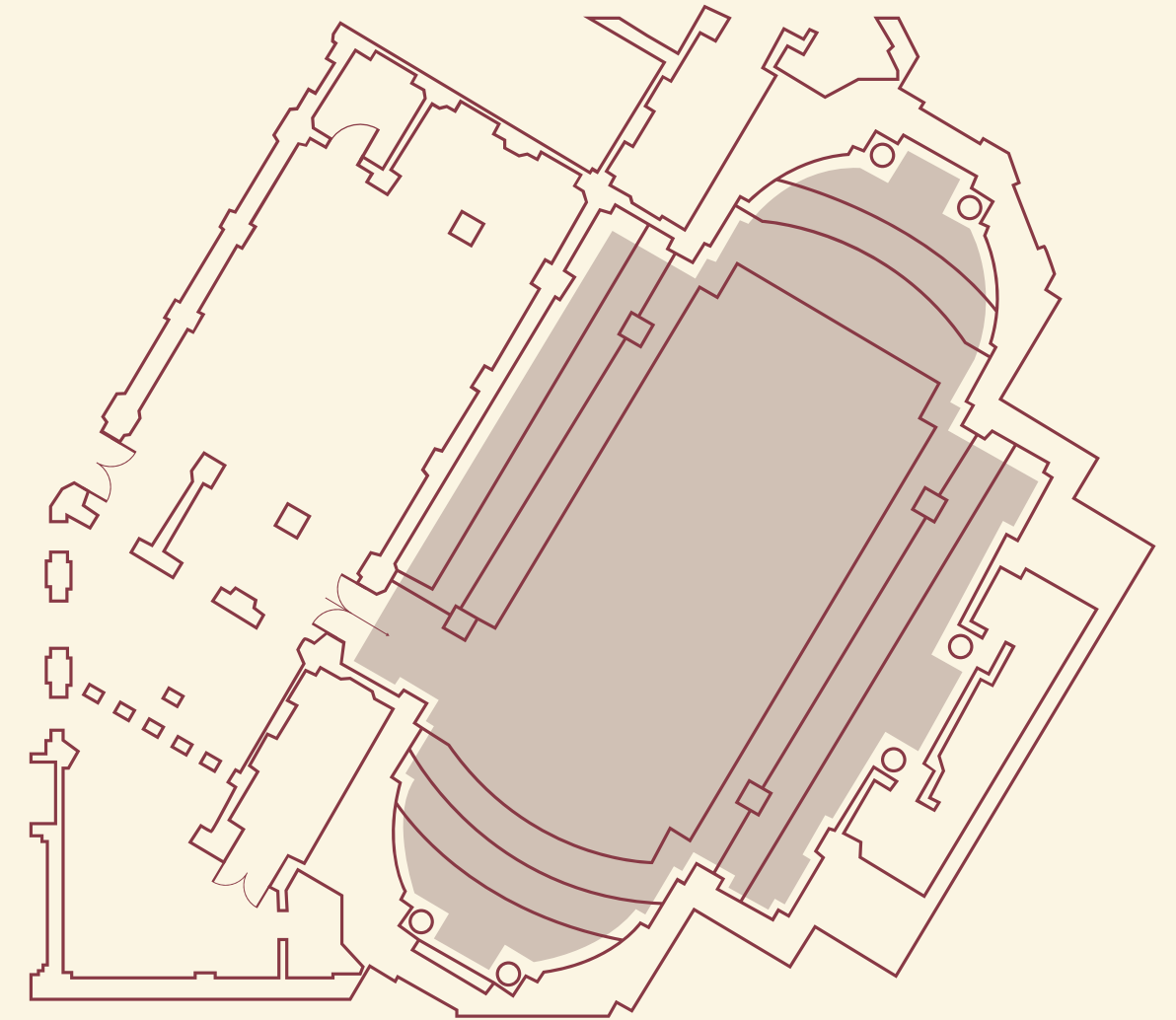
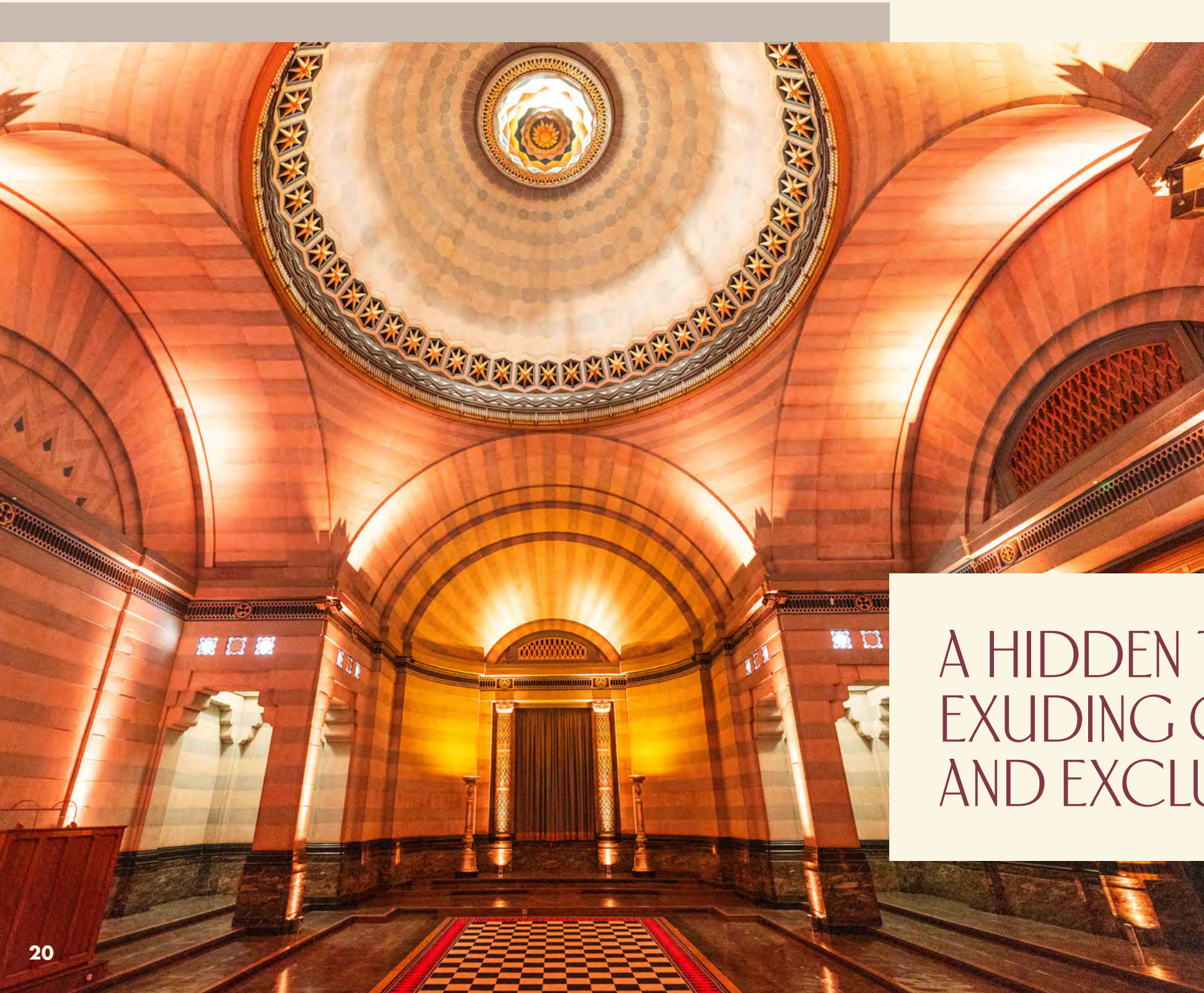
A UNIQUE MUSEUM SPACE
SUITABLE FOR BREAKOUTS

The South Gallery beautifully preserves the historic charm of its museum heritage. Encircled by a graceful mezzanine and adorned with original, striking architectural details, it radiates character whilst offering production potential as an extension to your event.

EGYPTIAN ROOM

USABLE FLOOR SPACE
270 M²

CAPACITIES
THEATRE **150**
SEATED **50**
CEREMONY **150**



A HIDDEN TREASURE
EXUDING OPULENCE
AND EXCLUSIVITY

This remarkable space is a well-kept secret nestled in the heart of 60 Great Queen Street. With its exclusive availability on select dates across the year, it stands out as a rare and coveted gem, perfect for those seeking a truly unique and distinguished events space.

Guests are welcomed through an ornate anteroom into the magnificent Egyptian Room, a space adorned with opulent gold accents, stunning grand pillars that exude timeless luxury. Ideal as an extension to your event space, however you see fit

INCLUSIONS

GROUND FLOOR

THE GALLERY & ANTEROOM

Inclusions:

- Grand entrance via 60 Great Queen Street
- Extended access from 7am to 11pm
- Late license available until 2 am available at an additional hourly cost
- Digital signage on arrival
- A turnkey conference package*
- Flexible arrangements to support rig and de-rig
- Dedicated Venue Manager
- Expert Catering Planner
- Access to our exclusive partners

* Additional cost to venue hire





INCLUSIONS

FIRST FLOOR

OPTION ONE **THE GRAND TEMPLE + VESTIBULES, TOWER DOORS & LONG ROOM**

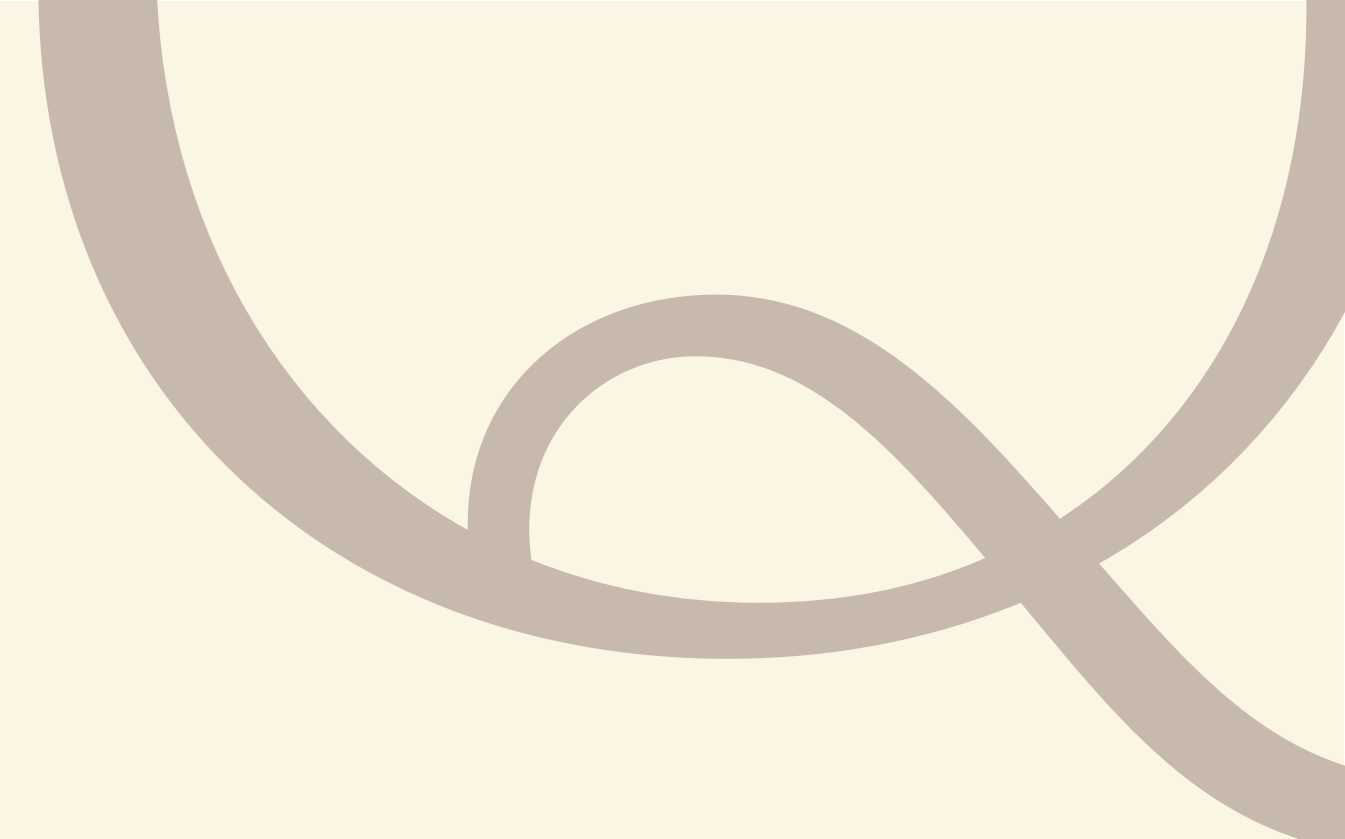
Inclusions:

- Grand entrance through the iconic bronze Tower Doors
- Access to the venue from 7am to 11pm
- Late license available until 2am available at an additional cost
- Large heritage cloakroom
- A built-in stage, ideal for presentations, key-note speakers and performances (within the Grand Temple only)
- Fixed conference seating (within the Grand Temple)
- Dedicated Venue Manager
- Access to our exclusive partners

OPTION TWO **THE VESTIBULES + TOWER DOORS, FOYER & LONG ROOM**

Inclusions:

- Grand entrance through the iconic bronze Tower Doors
- Extended access from 7am to 11pm
- Late license available until 2am available at an additional cost
- Large heritage cloakroom
- Flexible arrangements to support rig and de-rig
- Dedicated Venue Manager
- Expert Catering Planner
- Access to our exclusive partners



OUR SUPPLIERS

We are delighted to work alongside a handpicked selection of exceptional suppliers at 60 Great Queen Street. From stunning florists and outstanding catering to first-class entertainment, stylish furniture, and expert production teams, every detail is thoughtfully curated to bring each event to life with elegance and precision. Their passion and creativity ensure that every occasion at 60 Great Queen Street is truly unforgettable.

[MORE INFO](#)





CATERING

MOVING
VENUE

Moving Venue is 60 Great Queen Street's in-house catering partner and owned by Smart Group. Moving Venue's reputation for delicious food and outstanding excellence has secured this sensational catering company a place on the accredited supplier list of over 40 venues, in and around London.

Driven by creating memorable, delicious catering experiences, our in-house caterers design menus tailored to the style, budget and needs of your event and its guests. From intimate cocktail receptions to immersive conferences, from elegant gala dinners to stunning award ceremonies, their passionate, creative team of chefs devise dishes that your guests will simply love.



All of Moving Venue's menus are carefully considered from field to fork, always with seasonal ingredients, producing bespoke, vibrant and expertly crafted catering at their extraordinary events. They are experienced in ensuring their menus are deliverable for all events whilst ensuring innovation and creativity, using seasonal and sustainable ingredients, is always at the forefront of their creations.

movingvenue.com
greatfood@movingvenue.com
movingvenue



PRODUCTION



Deliver creative event production, from product launches to exhibitions, with seamless execution.

eventconcept.com
info@eventconcept.com
eventconcept



oxygen

Offer high-end production solutions, specialising in lighting, AV, set design, and technical installations.

oxygen-events.com
info@oxygen-events.com
oxygen_events



Provide seamless technical production for conferences and live broadcasts with expert AV solutions.

presentcommunications.com
kieron@presentcommunications.com
presentcomms



Specialise in lighting, sound, and video production, creating impactful experiences for events and brand launches.

prlive.co
hello@prlive.co
pr_live_



Specialise in creating tailored, elegant events that reflect their clients' visions, with a focus on seamless planning and exceptional experiences.

uptownevents.co.uk
create@uptownevents.co.uk
uptowneventsuk



Provide comprehensive event production services, including lighting, sound, and live entertainment, ensuring flawless execution.

velvetentertainment.net
info@velvetliving.co.uk
velvetentertainment



Offer tailored event design and production, creating unique experiences with innovative solutions.

vibrationproduction.com
hello@vibrationproduction.com
vibrationproduction_



Turn ambitious briefs into unforgettable live events with creative production and a collaborative approach.

wiseproductions.co.uk
events@wiseproductions.co.uk
wise_productions

ENTERTAINMENT

ALR MUSIC

Curating exclusive, high-energy live entertainment for luxury events worldwide, offering bespoke performances that captivate and energise guests.

alrmusic.co.uk
info@alrmusic.co.uk
alrmusic



Specialise in transforming events into memorable experiences with a variety of entertainment options, including games, live acts, and photo booths.

clownfischevents.com
hello@clownfischevents.com
clownfischevents

ÉLAN ARTISTS

Creates bold, cultural, and unforgettable floral designs for high-end private parties, weddings, and exclusive events worldwide.

elanartists.com
fran@elanartists.com
elanartists



Offer tailored musical performances by nurturing and developing a diverse roster of artists to meet client needs.

euphonica.com
hello@euphonica.com
euphonalive



Deliver bespoke DJ and live music experiences for weddings, corporate events, and parties, tailoring each performance to their clients' unique preferences.

musicalmovements.co.uk
info@musicalmovements.co.uk
musicalmovements



Deliver exceptional acts for various events, from corporate gatherings to weddings, with over 30 years of experience.

sternbergclarke.co.uk
adam@sternbergclarke.co.uk
sternbergclarke



Provide comprehensive event production services, including lighting, sound, and live entertainment, ensuring flawless execution.

velvetentertainment.net
artistmanagement@velvetentertainment.net
velvetentertainment

FLORISTS



AMIE BONE

Creates bold, cultural, and unforgettable floral designs for high-end private parties, weddings, and exclusive events worldwide.

amiebone.com
enquiries@amiebone.com
amieboneflowers



BLOOMSBURY FLOWERS

Sophistication and elegance define Bloomsbury Flowers, known for their timeless floral designs delivered across London and the UK.

bloomsburyflowers.co.uk
info@bloomsburyflowers.co.uk
bloomsburyflowerslondon

FLOWER & PRESS
LONDON

Specialise in sustainable, seasonal floral designs, repurposing flowers into artwork and stationery to minimise waste.

flowerandpress.com
info@flowerandpress.com
flowerandpress

hybrid

Known for their artistic and thoughtful floral designs, tailored to corporate, wedding, and private event clients across London.

hybridflowers.co.uk
info@hybridflowers.co.uk
hybrid.flowers

LAVENDER  GREEN
FLOWERS

Luxurious, creative floral designs for events and weddings, blending seasonality with elegance and expertise.

lavendergreen.co.uk
info@lavendergreen.co.uk
lavendergreenflowers

Mary Jane Vaughan
DESIGN IN FLOWERS

Leading London-based luxury florist, renowned for creating elegant, seasonal floral arrangements for weddings, events, and corporate clients.

maryjanevaughan.co.uk
info@maryjanevaughan.co.uk
maryjanevaughan

PINSTripES
&
PEONIES

Offers innovative, bespoke floral designs for weddings, events, and film productions, always delivering with a 'can do' attitude.

pinstripesandpeonies.com
flowers@pinstripesandpeonies.com
pandpflowers

 Veevers
Carter

Transform events with their unique, imaginative floral designs, blending artistry and botanical beauty for unforgettable experiences.

veeverscarter.com
info@veeverscarter.com
veeverscarter

FURNITURE



Provide unique, high-quality furniture hire for live events, TV, and the weddings market.

furnitureonthemove.co.uk
adam@furnitureonthemove.co.uk
furnitureonthemov



Offer stylish furniture and tableware hire, delivering seamless service for events of all sizes.

options-greathire.co.uk
welcome@options-greathire.co.uk
optionsgreathire



Specialise in portable bar hire, providing stylish cocktail bars for corporate events and weddings.

rhinobarhire.com
david@rhinobarhire.com
rhinobarhire



Provide stylish lounge furniture, mobile bars, and accessories, seamlessly combining with production and entertainment services.

velvetliving.co.uk
info@velvetliving.co.uk
velvetliving



Specialise in event furniture and catering equipment hire, offering reliable, high-quality products for all event types.

yahire.com
david@yahire.com
yahireltd

SUSTAINABILITY

Local and seasonal sourcing goes hand in hand with reducing food miles and our collective carbon footprint. We are committed to buying products of the highest quality and as a fresh food company over 80% of the produce we source is brought in fresh. We focus on seasonality and sustainability and where possible buy food that has been produced in the UK.

Recognising food waste is a huge contributor to climate change. Moving Venue have made a pledge to reduce their food waste by 50% by 2025, we will achieve this by taking a considered approach to deliver meaningful step changes over time.



90% of our Leaf Marque assured fruit and vegetables are sourced in Britain.

Our meat is Red Tractor assured produced and 100% sourced in Britain.

All our products are sourced from sustainable, certified, ethical trade or Fairtrade sources in line with the BRC Global standard.

We only use fish from sustainable stocks, promoting fish recommended by the Marine Conservation Society (MCS).

Every tonne of food waste is recycled by anaerobic digestion and as an alternative to landfill, prevents approx. 1.0 tonne of CO2 entering the atmosphere.



Nestled in the heart of Covent Garden, 60 Great Queen Street offers a prime location amidst London's iconic landmarks, luxury hotels, and excellent transport links. Surrounded by boutique shops, famous theatres, and iconic sights, it provides effortless accessibility with the lively charm of the capital, making it an ideal location for your event.

LOCATION

60 Great Queen Street
WC2B 5AZ

Walking distance from:

Holborn Station	4 min
Covent Garden Station	4 min
Leicester Square Station	8 min
Waterloo Station	24 min
Uber Boat at Embankment	17 min

From Heathrow Airport

By train	1 hour
By car	1 hour

PLANNING AN EVENT AT 60 GREAT QUEEN STREET?

**OUR DEDICATED TEAM IS HERE TO
ASSIST YOU EVERY STEP OF THE WAY.**

Whether you're hosting a corporate gathering, or intimate occasion, we'll tailor every detail to your vision.

Contact us today to explore availability, schedule a site visit, or discuss bespoke packages. Let us help you bring your event to life in this iconic Art Deco setting.



020 7438 2032



sales@60greatqueenst.co.uk



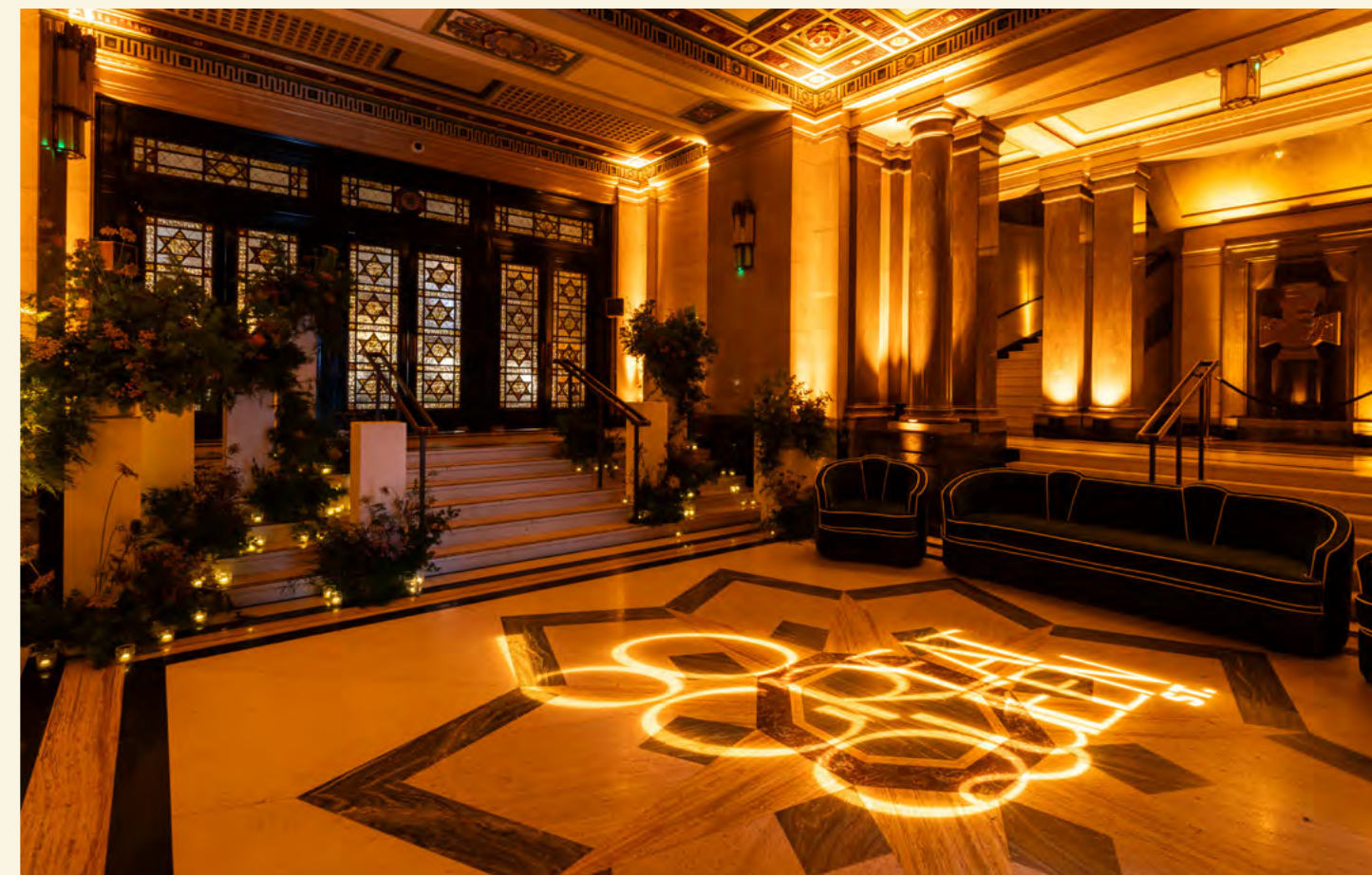
60 Great Queen St, London WC2B 5AZ



@60greatqueenst



60-great-queen-street



60
GREAT
QUEEN
ST.

60GREATQUEENST.CO.UK